



Ruijie Reyee RG-ES100 Series Switches

Hardware Installation and Reference Guide

Copyright Statement

Ruijie Networks©2021

Ruijie Networks reserves all copyrights of this document. Any reproduction, excerption, backup, modification, transmission, translation or commercial use of this document or any portion of this document, in any form or by any means, without the prior written consent of Ruijie Networks is prohibited.

Exemption Statement

This document is provided “as is”. The contents of this document are subject to change without any notice. Please obtain the latest information through the Ruijie Networks website. Ruijie Networks endeavors to ensure content accuracy and will not shoulder any responsibility for losses and damages caused due to content omissions, inaccuracies or errors.

Preface

Thank you for using our products. This manual will guide you through the installation of the device.

This manual describes the functional and physical features and provides the device installation steps, hardware troubleshooting, module technical specifications, and specifications and usage guidelines for cables and connectors.

Audience

It is intended for the users who have some experience in installing and maintaining network hardware. At the same time, it is assumed that the users are already familiar with the related terms and concepts.

Obtaining Technical Assistance

- Ruijie Networks Website: <https://www.ruijienetworks.com/>
- Technical Support Website: <https://ruijienetworks.com/support>
- Case Portal: <https://caseportal.ruijienetworks.com>
- Community: <https://community.ruijienetworks.com>
- Technical Support Email: service_rj@ruijienetworks.com
- Skype: [service_rj@ruijienetworks.com](https://www.ruijienetworks.com)


Related Documents

Documents	Description
Configuration Guide	Describes network protocols and related mechanisms that supported by the product, with configuration examples.
Command Reference	Describes the related configuration commands, including command modes, parameter descriptions, usage guides, and related examples.

Symbol Conventions

The symbols used in this document are described as below:


 Means reader take note. Notes contain helpful suggestions or references.

 This symbol means that you must be extremely careful not to do some things that may damage the device or cause data loss

1 Product Overview

The RG-ES100 series switches include the following models:

Model	10/100Base-TX Auto-sensing Ethernet Port	10/100/1000Base-T Auto-sensing Ethernet Port	1000Base-X SFP Port	Console Port
RG-ES106D-P	6 (Ports 1-4 support PoE/PoE+)	N/A	N/A	N/A
RG-ES126S-LP	24 (Ports 1-24 support PoE/PoE+)	2	1 (Combo)	N/A
RG-ES110D-P	8 (Ports 1-8 support PoE/PoE+)	2	N/A	N/A
RG-ES116G	N/A	16	N/A	N/A
RG-ES124GD	N/A	24	N/A	N/A
RG-ES118S-LP	16 (Ports 1-16 support PoE/PoE+)	2	2 (Combo)	N/A

 1000Base-T is downward compatible with 100Base-TX and 10Base-T.

 The SFP ports cannot be downward compatible with 100Base-FX.

1.1 RG-ES106D-P

Technical Specifications

Model	RG-ES106D-P
Ports	6 10/100Base-TX auto-sensing Ethernet ports, ports 1-4 support PoE/PoE+.
Power Supply	<ul style="list-style-type: none"> AC input <p>Rated voltage range: 100 VAC to 240 VAC Maximum voltage range: 90 VAC to 264 VAC Frequency: 50/60 Hz Rated current: 1.5 A</p> <ul style="list-style-type: none"> Adapter output <p>Rated voltage range: 51 VDC Rated current range: 1.25 A</p>
EEE	Not supported
PoE	<p>Support PoE and PoE+.</p> <p>Ports 1-4 are PoE/PoE+-capable with the maximum power output of 30W per port. Ports 5-6 do not support PoE or PoE+.</p> <p>The overall maximum output power of PoE/PoE+ is 58W.</p>
Power Consumption	<p>Less than 7W with no PoE load</p> <p>Less than 67W with PoE full load</p>
Operating Temperature	0°C to 45°C (32°F to 113°F)
Storage Temperature	-40°C to 70°C (-40°F to 158°F)

Operating Humidity	10% to 90% RH
Storage Humidity	5% to 95% RH
Port Mode	Support switchover in three modes: 1. Flow Control On 2. Flow Control Off 3. Port Isolation. When this mode is enabled, ports 1-4 are isolated from each other, but can communicate with ports 5-6.
Fan	Not supported
Temperature Warning	Not supported
Accessing Optical Module Information	Not supported
EMC Standards	GB9254-2008 EN 55032:2015 EN 55035:2017 EN IEC61000-3-2:2019 EN 61000-3-3:2013 Draft ETSI EN 300 386 V2.2.0 (2020-10)
Security Standards	GB4943-2011 EN 62638-1
Earth Leakage Current	≤ 1.5mA
Dimensions (W x D x H)	100 mm x 100 mm x 26 mm (3.94 in. x 3.94 in. x 1.02 in.)
Weight (With Package)	0.66 kg (1.46 lbs)

! The RG-ES106D-P switch is a class A product. In a domestic environment, this product may cause radio interference in which case the user may be required to take adequate measures.

Product Appearance

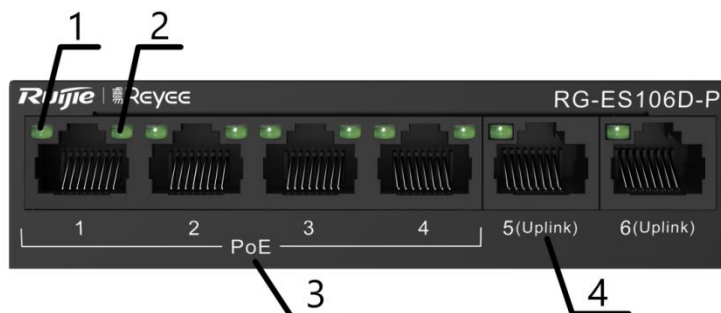
RG-ES106D-P provides 6 10/100Base-TX auto-sensing Ethernet ports on the front panel, and a port mode switch-over button, a system status LED, a power socket and a grounding pole on the back panel.

Figure 1-1 Appearance of RG-ES106D-P



Front Panel

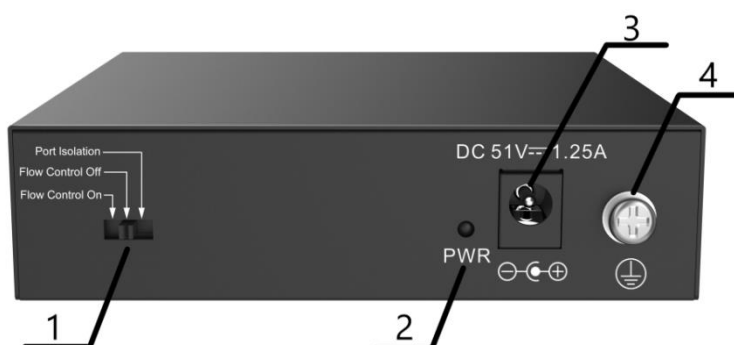
Figure 1-2 Front Panel of RG-ES106D-P



Note:	<p>1. Copper port status LED</p> <p>2. PoE status LED</p> <p>3. 10/100Base-TX PoE port</p> <p>4. 10/100Base-TX auto-sensing Ethernet port</p>
-------	---

Back Panel

Figure 1-3 Back Panel of RG-ES106D-P



Note:	<p>1. Port mode switch-over button</p> <p>2. System status LED</p> <p>3. DC power socket</p> <p>4. Grounding pole</p>
-------	---

Heat Dissipation

The RG-ES106D-P adopts natural heat dissipation, thereby ensuring normal function of the device. Maintain a minimum clearance of 100 mm (3.94 in.) around the device. It is recommended to clean the device once every 3 months to avoid dust from blocking vents.

LEDs

LED	Panel Identification	State	Meaning
System status LED	PWR	Off	The switch is powered off.
		Solid green	The switch is operational.
RJ45 port status LED	Upper left corner of the port	Off	The port is not connected.
		Solid green	The port is connected at 10/100 Mbps.
		Blinking green	The port is receiving or sending traffic at 10/100 Mbps.
RJ45 PoE status LED	Upper left corner of the port	Off	PoE does not supply power.
		Solid green	PoE is operational.

1.2 RG-ES126S-LP

Technical Specifications

Model	RG-ES126S-LP
Ports	<p>Ports 1-24 are 10/100Base-TX auto-sensing Ethernet ports, and support PoE/PoE+</p> <p>Ports 25 and 26 are 10/100/1000Base-T auto-sensing Ethernet ports, and do not support PoE/PoE+</p> <p>Port 26F is a 1000Base-X SFP port multiplexed with Port 26 as a combo port, and the SFP port takes priority</p>
Power Supply	<ul style="list-style-type: none"> ● AC input <p>Rated voltage range: 100 VAC to 240 VAC</p> <p>Maximum voltage range: 90 VAC to 264 VAC</p> <p>Frequency: 50/60 Hz</p> <p>Rated current: 4 A Max</p>
EEE	Not supported
PoE	<p>Support PoE and PoE+.</p> <p>Ports 1-24 are PoE/PoE+-capable with the maximum power output of 30W per port. Ports 25-26 do not support PoE or PoE+.</p> <p>The overall maximum output power of PoE/PoE+ is 180W.</p>
Power Consumption	<p>Less than 10W with no PoE load</p> <p>Less than 220W with PoE full load</p>
Operating Temperature	0°C to 45°C (32°F to 113°F)

Storage Temperature	-40°C to 70°C (-40°F to 158°F)
Operating Humidity	10% to 90% RH
Storage Humidity	5% to 95% RH
Port Mode	Support switchover in three modes: 1. Flow Control On 2. Flow Control Off 3. Port Isolation. When this mode is enabled, ports 1-24 are isolated from each other, but can communicate with ports 25, 26 and 26F.
Fan	Supported
Temperature Warning	Not supported
Accessing Optical Module Information	Not supported
EMC Standards	GB9254-2008 EN 55032:2015 EN 55035:2017 EN IEC61000-3-2:2019 EN 61000-3-3:2013 Draft ETSI EN 300 386 V2.2.0 (2020-10)
Security Standards	GB4943-2011 EN 62638-1
Earth Leakage Current	≤ 1.5mA
Dimensions (W x D x H)	440 mm x 208 mm x 44 mm (17.32 in. x 8.19 in. x 1.73 in.)
Weight (With Package)	3 kg (6.61 lbs)

! The RG-ES126S-LP switch is a class A product. In a domestic environment, this product may cause radio interference in which case the user may be required to take adequate measures.

Product Appearance

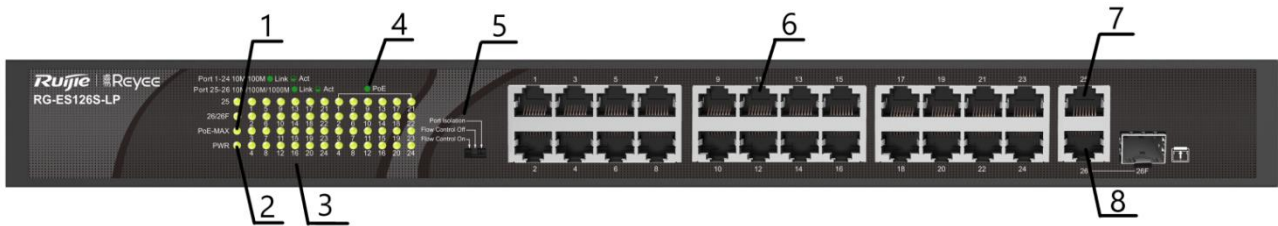
RG-ES126S-LP provides 24 10/100Base-TX auto-sensing Ethernet ports, 2 10/100/1000Base-T auto-sensing Ethernet ports, a 1000Base-X SFP port, system status LEDs and a port mode switch-over button on the front panel, and a power socket and a grounding pole on the back panel.

Figure 1-4 Appearance of RG-ES126S-LP



Front Panel

Figure 1-5 Front Panel of RG-ES126S-LP



Note:	1. PoE overload LED	6. 10/100Base-TX auto-sensing Ethernet port
	2. System status LED	7. 10/100/1000Base-T auto-sensing Ethernet port
	3. Port status LED	8. 10/100/1000Base-T combo port
	4. PoE status LED	
	5. Port mode switch-over button	

Back Panel

Figure 1-6 Back Panel of RG-ES126S-LP



Note:	1. Grounding pole
	2. AC power socket

Heat Dissipation

The RG-ES126S-LP adopts fans for heat dissipation, thereby ensuring normal function of the device in the specified environment. 10 cm distance space should be reserved at both sides and the back plane of the cabinet to allow air circulation. It is recommended to clean the device once every 3 months to avoid dust from blocking vents.

LEDs

LED	Panel Identification	State	Meaning
System status LED	PWR	Off	The switch is powered off.
		Solid green	The switch is operational.

PoE overload LED	PoE-max	Off	The overall PoE output does not reach the maximum power.
		Solid green	The overall PoE output reaches the maximum power.
RJ45 port status LED	Link/Act (1-24, 25, 26/26F)	Off	The port is not connected.
		Solid green	The port is connected at 10/100/1000 Mbps.
		Blinking green	The port is receiving or sending traffic at 10/100/1000 Mbps.
RJ45 PoE status LED	PoE (1-24)	Off	PoE does not supply power.
		Solid green	PoE is operational.

1.3 RG-ES110D-P

Technical Specifications

Model	RG-ES110D-P
Ports	8 10/100Base-TX auto-sensing Ethernet ports (Auto MDI/MDIX), and support PoE/PoE+ 2 10/100/1000Base-T auto-sensing Ethernet ports (Auto MDI/MDIX)
Power Supply	<ul style="list-style-type: none"> AC input <p>Rated voltage range: 100 VAC to 240 VAC Maximum voltage range: 90 VAC to 264 VAC Frequency: 50/60 Hz Rated current: 1.6 A</p> <ul style="list-style-type: none"> Adapter output <p>Rated voltage range: 53.5 VDC Rated current range: 2.24 A</p>
EEE	Port 1-8: Supported Port 9-10: Not Supported
PoE	Support PoE and PoE+. Ports 1-8 are PoE/PoE+-capable with the maximum power output of 30W per port. Ports 9-10 do not support PoE or PoE+. The overall maximum output power of PoE/PoE+ is 110W.
Power Consumption	Less than 8W with no PoE load Less than 129W with PoE full load
Operating Temperature	0°C to 45°C (32°F to 113°F)

Storage Temperature	-40°C to 70°C (-40°F to 158°F)
Operating Humidity	10% to 90% RH
Storage Humidity	5% to 95% RH
Port Mode	Support switchover in three modes: 1. Flow Control On 2. Flow Control Off 3. Port Isolation. When this mode is enabled, ports 1-8 are isolated from each other, but can communicate with ports 9 and 10.
Fan	Not supported
Temperature Warning	Not supported
Accessing Optical Module Information	Not supported
EMC Standards	GB9254-2008 EN 55032:2015 EN 55035:2017 EN IEC61000-3-2:2019 EN 61000-3-3:2013 Draft ETSI EN 300 386 V2.2.0 (2020-10)
Security Standards	GB4943-2011 EN 62638-1
Earth Leakage Current	≤ 1.5mA
Dimensions (W x D x H)	190 mm x 100 mm x 28 mm (7.48 in. x 3.94 in. x 1.1 in.)
Weight (With Package)	1.3 kg (2.87 lbs)



The RG-ES110D-P switch is a class A product. In a domestic environment, this product may cause radio interference in which case the user may be required to take adequate measures.

Product Appearance

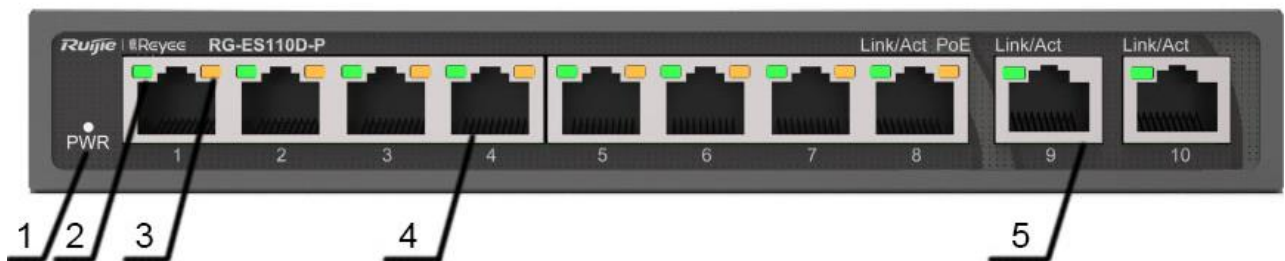
RG-ES110D-P provides 8 10/100Base-TX auto-sensing Ethernet ports, 2 10/100/1000Base-T auto-sensing Ethernet ports, and LED indicators on the front panel, and a power socket, a port mode switch-over button and a grounding pole on the back panel.

Figure 1-7 Appearance of RG-ES110D-P



Front Panel

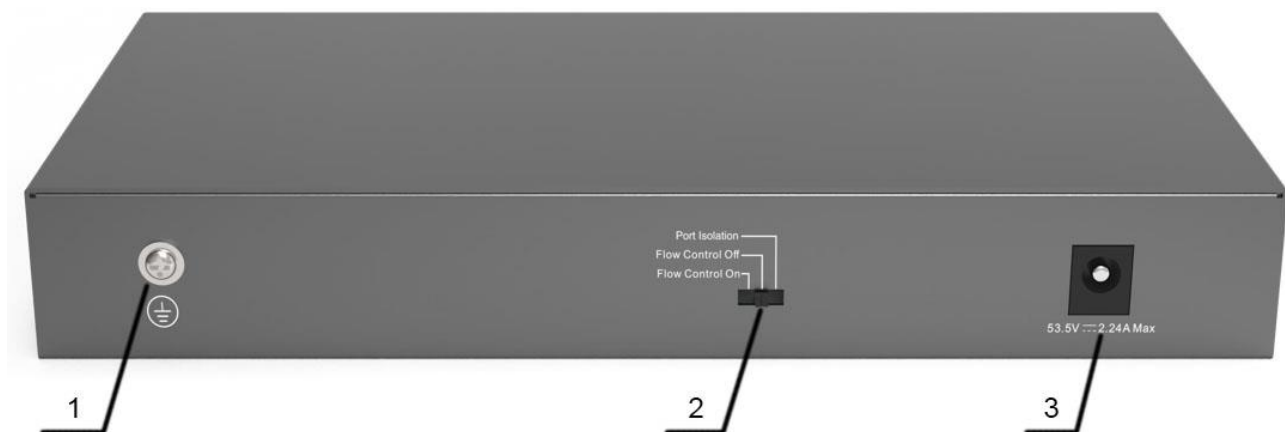
Figure 1-8 Front Panel of RG-ES110D-P



- | | |
|-------|---|
| Note: | <ol style="list-style-type: none"> 1. System status LED 2. Port status LED 3. PoE status LED 4. 10/100Base-TX PoE port 5. 10/100/1000Base-T auto-sensing Ethernet port |
|-------|---|

Back Panel

Figure 1-9 Back Panel of RG-ES110D-P



Note:	1. Grounding pole 2. Port mode switch-over button 3. DC power socket
-------	--

Heat Dissipation

The RG-ES110D-P adopts natural heat dissipation, thereby ensuring normal function of the device. Maintain a minimum clearance of 100 mm (3.94 in.) around the device. It is recommended to clean the device once every 3 months to avoid dust from blocking vents.

LEDs

LED	Panel Identification	State	Meaning
System status LED	PWR	Off	The switch is powered off.
		Solid green	The switch is operational.
RJ45 port status LED	Link/ACT (1-10)	Off	The port is not connected.
		Solid green	The port is connected at 10/100/1000 Mbps.
		Blinking green	The port is receiving or sending traffic at 10/100/1000 Mbps.
RJ45 PoE status LED	PoE (1-8)	Off	PoE does not supply power.
		Solid green	PoE is operational.
		Blinking green	PoE is overloaded.

1.4 RG-ES118S-LP

Technical Specifications

Model	RG-ES118S-LP
Ports	16 10/100Base-TX auto-sensing Ethernet ports (Auto MDI/MDIX), and support PoE/PoE+ 2 1000Base-X SFP combo ports
Power Supply	<ul style="list-style-type: none"> AC input Rated voltage range: 100 VAC to 240 VAC Maximum voltage range: 90 VAC to 264 VAC

	Frequency: 50/60 Hz Rated current: 2.5 A
EEE	Port 1-16: Supported Port 17-18: Not Supported
PoE	Support PoE and PoE+. Ports 1-16 are PoE/PoE+-capable with the maximum power output of 30W per port. Ports 17-18 do not support PoE or PoE+. The overall maximum output power of PoE/PoE+ is 120W.
Power Consumption	Less than 13W with no PoE load Less than 148W with PoE full load
Operating Temperature	0°C to 45°C (32°F to 113°F)
Storage Temperature	-40°C to 70°C (-40°F to 158°F)
Operating Humidity	10% to 90% RH
Storage Humidity	5% to 95% RH
Port Mode	Support switchover in three modes: 1. Flow Control On 2. Flow Control Off 3. Port Isolation. When this mode is enabled, ports 1-16 are isolated from each other, but can communicate with ports 17 and 18.
Fan	Not supported
Temperature Warning	Not supported
Accessing Optical Module Information	Not supported
EMC Standards	GB9254-2008 EN 55032:2015 EN 55035:2017 EN IEC61000-3-2:2019 EN 61000-3-3:2013 Draft ETSI EN 300 386 V2.2.0 (2020-10)
Security Standards	GB4943-2011 EN 62638-1
Earth Leakage Current	≤ 1.5mA
Dimensions (W x D x H)	440 mm x 208 mm x 44 mm (17.32 in. x 8.19 in. x 1.73 in.)
Weight (With Package)	3.40 kg (7.50 lbs)



The RG-ES118S-LP switch is a class A product. In a domestic environment, this product may cause radio interference in which case the user may be required to take adequate measures.

Product Appearance

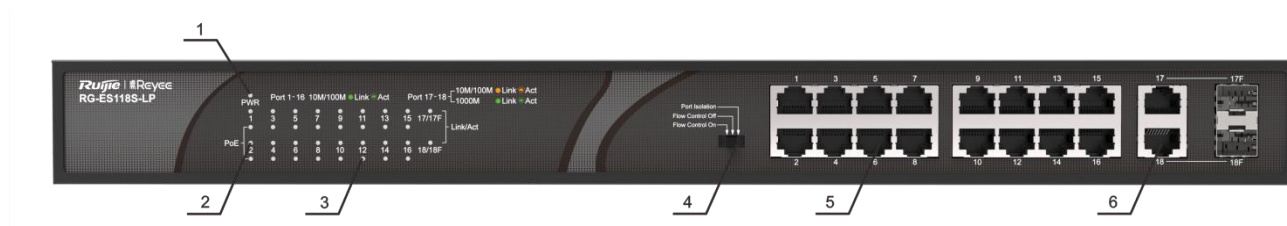
RG-ES118S-LP provides 16 10/100Base-TX auto-sensing Ethernet ports, 2 1000Base-X SFP combo ports, a port mode switch-over button and LED indicators on the front panel, and a power socket and a grounding pole on the back panel.

Figure 1-4 Appearance of RG-ES118S-LP



Front Panel

Figure 1-5 Front Panel of RG-ES118S-LP



Note:	<p>1. System status LED</p> <p>2. Port status LED</p> <p>3. PoE status LED</p>	<p>4. Port mode switch-over button</p> <p>5. 10/100Base-TX auto-sensing Ethernet port</p> <p>6. 10/100/1000Base-T combo port</p>
-------	--	--

Back Panel

Figure 1-6 Back Panel of RG-ES118S-LP



Note:	1. Grounding pole 2. AC power socket
-------	---

Heat Dissipation

The RG-ES118S-LP adopts fans for heat dissipation, thereby ensuring normal function of the device in the specified environment. 10 cm distance space should be reserved at both sides and the back plane of the cabinet to allow air circulation. It is recommended to clean the device once every 3 months to avoid dust from blocking vents.

LEDs

LED	Panel Identification	State	Meaning
System status LED	PWR	Off	The switch is powered off.
		Solid green	The switch is operational.
RJ45 port status LED	Link/ACT (1-16)	Off	The port is not connected.
		Solid green	The port is connected at 10/100 Mbps.
		Blinking green	The port is receiving or sending traffic at 10/100 Mbps.
Combo port LED	Link/ACT (17/17F, 18/18F)	Off	The port is not connected.
		Solid orange	The port is connected at 100 Mbps.
		Blinking orange	The port is receiving or sending traffic at 100 Mbps.
		Solid green	The port is connected at 1000 Mbps.
		Blinking green	The port is receiving or sending traffic at 1000 Mbps.
RJ45 PoE status LED	PoE (1-16)	Off	PoE does not supply power.
		Solid green	PoE is operational.
		Blinking green	PoE is overloaded.

1.5 RG-ES116G

Technical Specifications

Model	RG-ES116G
Ports	16 10/100/1000Base-T auto-sensing Ethernet ports
Power Supply	<ul style="list-style-type: none"> ● AC input <p>Rated voltage range: 100 VAC to 240 VAC Maximum voltage range: 90 VAC to 264 VAC Frequency: 50/60 Hz Rated current: 0.5 A</p>
EEE	Not supported
PoE	Not supported
Power Consumption	11 W
Operating Temperature	0°C to 45°C (32°F to 113°F)
Storage Temperature	-40°C to 70°C (-40°F to 158°F)
Operating Humidity	10% to 90% RH
Storage Humidity	5% to 95% RH
Port Mode	<p>Support switchover in four modes:</p> <ol style="list-style-type: none"> 1. Flow Control On 2. Flow Control Off 3. Port Isolation. When this mode is enabled, ports 1-14 are isolated from each other, and can communicate with ports 15-16. 4. Extend Data Transmission-10Mbps. When this mode is enabled, ports 1-8 have a reduced speed of 10 Mbps, with a transmission distance of up to 250 m. (Note: If compatibility is considered, some ports may not may not deliver such a transmission distance.)
Fan	Not supported
Temperature Warning	Not supported
Accessing Optical Module Information	Not supported
EMC Standards	<p>GB9254-2008 EN 55032:2015 EN 55035:2017 EN IEC61000-3-2:2019 EN 61000-3-3:2013 Draft ETSI EN 300 386 V2.2.0 (2020-10)</p>
Security Standards	<p>GB4943-2011 EN 62638-1</p>

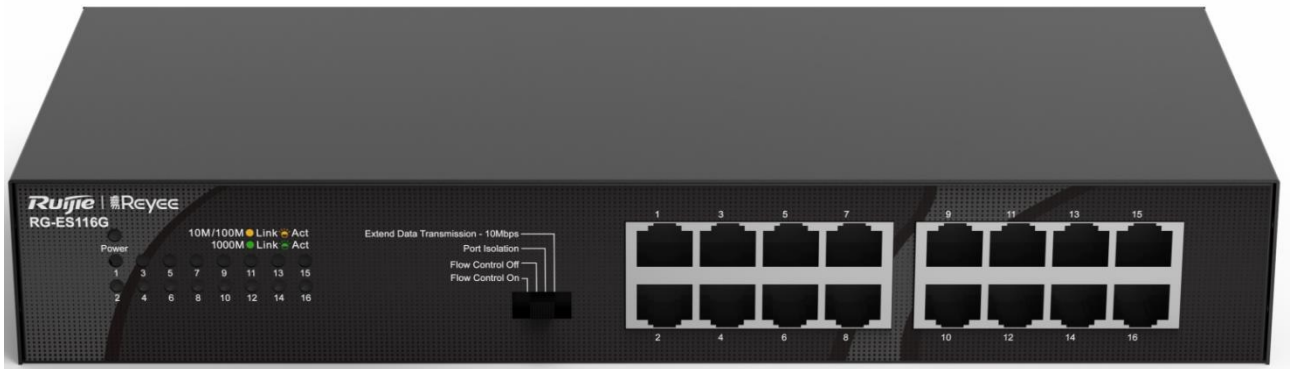
Earth Leakage Current	≤ 1.5mA
Dimensions (W x D x H)	280 mm x 126 mm x 44 mm (11.02 in. x 4.96 in. x 1.73 in.)
Weight (With Package)	1.75 kg (3.86 lbs)

! The RG-ES116G switch is a class A product. In a domestic environment, this product may cause radio interference in which case the user may be required to take adequate measures.

Product Appearance

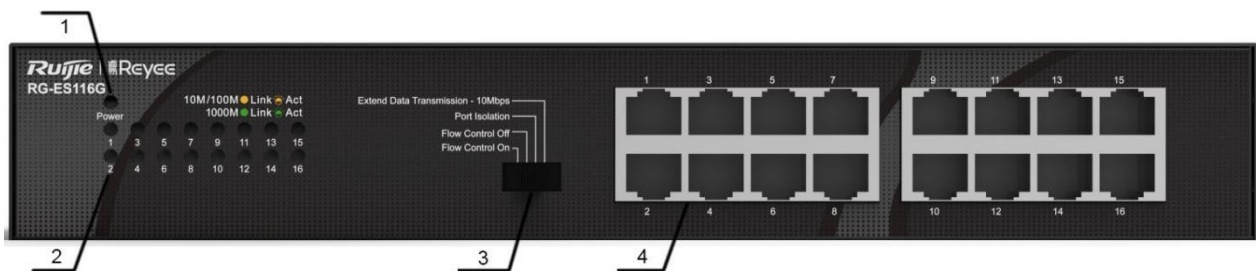
RG-ES116G provides 16 10/100/1000Base-T auto-sensing Ethernet ports, a port mode switch-over button and LED indicators on the front panel, and a power socket and a grounding pole on the back panel.

Figure 1-10 Appearance of RG-ES116G



Front Panel

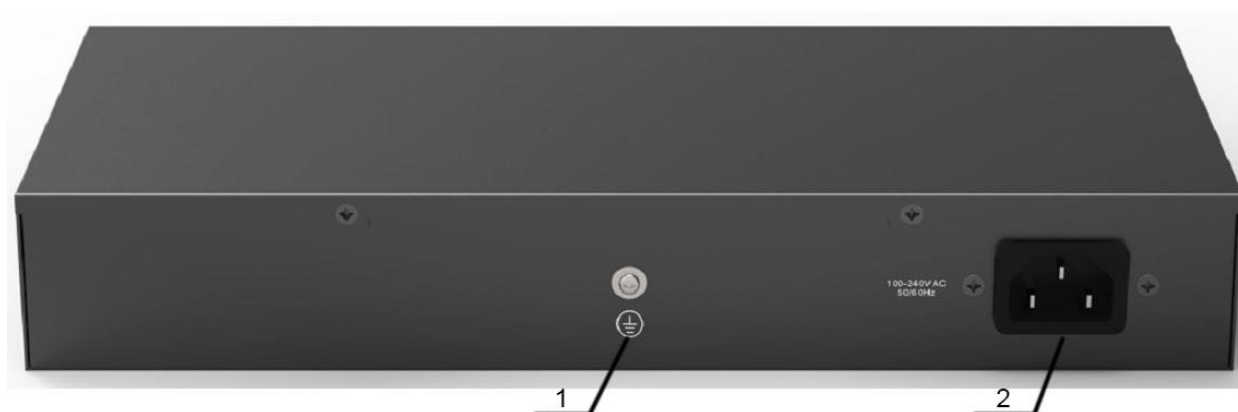
Figure 1-11 Front Panel of RG-ES116G



- Note:
1. System status LED
 2. Port status LED
 3. Port mode switch-over button
 4. 10/100/1000Base-T auto-sensing Ethernet port

Back Panel

Figure 1-12 Back Panel of RG-ES116G



Note:	1. Grounding pole
	2. AC power port

Heat Dissipation

The RG-ES116G adopts natural heat dissipation, thereby ensuring normal function of the device. Maintain a minimum clearance of 100 mm (3.94 in.) around the device. It is recommended to clean the device once every 3 months to avoid dust from blocking vents.

LEDs

LED	Panel Identification	State	Meaning
System status LED	Power	Off	The switch is powered off.
		Solid green	The switch is operational.
RJ45 port status LED	Link/ACT (1-16)	Off	The port is not connected.
		Solid orange	The port is connected at 10/100 Mbps.
		Blinking orange	The port is receiving or sending traffic at 10/100 Mbps.
		Solid green	The port is connected at 1000 Mbps.
		Blinking green	The port is receiving or sending traffic at 1000 Mbps.

1.6 RG-ES124GD

Technical Specifications

Model	RG-ES124GD
Ports	24 10/100/1000Base-T auto-sensing Ethernet ports
Power Supply	<ul style="list-style-type: none"> ● AC input <p>Rated voltage range: 100 VAC to 240 VAC Maximum voltage range: 90 VAC to 264 VAC Frequency: 50/60 Hz Rated current: 0.5 A</p>
EEE	Not supported
PoE	Not supported
Power Consumption	16 W
Operating Temperature	0°C to 45°C (32°F to 113°F)
Storage Temperature	-40°C to 70°C (-40°F to 158°F)
Operating Humidity	10% to 90% RH
Storage Humidity	5% to 95% RH
Port Mode	<p>Support switchover in four modes:</p> <ol style="list-style-type: none"> 1. Flow Control On 2. Flow Control Off 3. Port Isolation. When this mode is enabled, ports 1-22 are isolated from each other, and can communicate with ports 23-24. 4. Extend Data Transmission-10Mbps. When this mode is enabled, ports 1-8 have a reduced speed of 10 Mbps, with a transmission distance of up to 250 m. (Note: If compatibility is considered, some ports may not may not deliver such a transmission distance.)
Fan	Not supported
Temperature Warning	Not supported
Accessing Optical Module Information	Not supported
EMC Standards	<p>GB9254-2008 EN 55032:2015 EN 55035:2017 EN IEC61000-3-2:2019 EN 61000-3-3:2013 Draft ETSI EN 300 386 V2.2.0 (2020-10)</p>
Security Standards	<p>GB4943-2011 EN 62638-1</p>

Earth Leakage Current	≤ 1.5mA
Dimensions (W x D x H)	280 mm x 126 mm x 44 mm (11.02 in. x 4.96 in. x 1.73 in.)
Weight (With Package)	1.76 kg (3.88 lbs)

! The RG-ES124GD switch is a class A product. In a domestic environment, this product may cause radio interference in which case the user may be required to take adequate measures.

Product Appearance

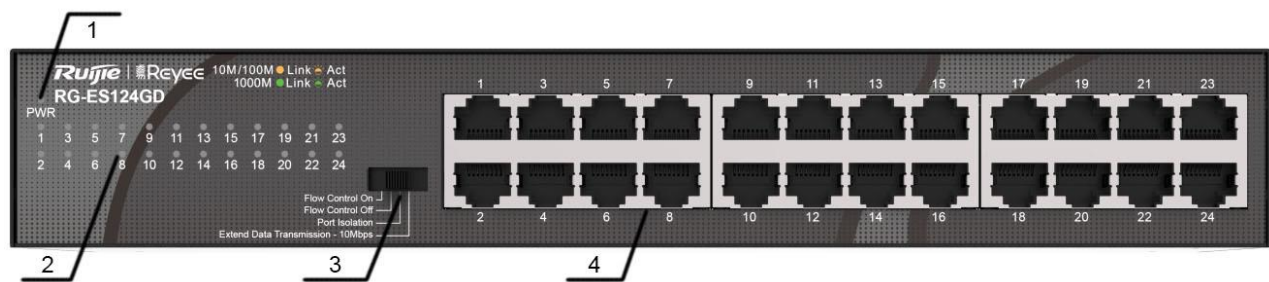
RG-ES124GD provides 24 10/100/1000Base-T auto-sensing Ethernet ports, a port mode switch-over button and LED indicators on the front panel, and a power socket and a grounding pole on the back panel.

Figure 1-10 Appearance of RG-ES124GD



Front Panel

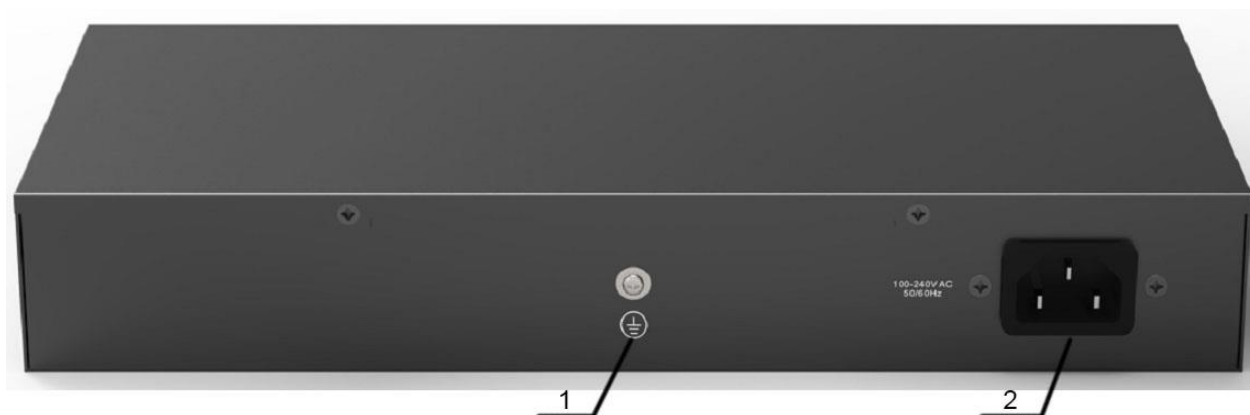
Figure 1-11 Front Panel of RG-ES124GD



- Note:
1. System status LED
 2. Port status LED
 3. Port mode switch-over button
 4. 10/100/1000Base-T auto-sensing Ethernet port

Back Panel

Figure 1-12 Back Panel of RG-ES124GD



Note:	1. Grounding pole
	2. AC power socket

Heat Dissipation

The RG-ES124GD adopts natural heat dissipation, thereby ensuring normal function of the device. Maintain a minimum clearance of 100 mm (3.94 in.) around the device. It is recommended to clean the device once every 3 months to avoid dust from blocking vents.

LEDs

LED	Panel Identification	State	Meaning
System status LED	Power	Off	The switch is powered off.
		Solid green	The switch is operational.
RJ45 port status LED	Link/ACT(1-24)	Off	The port is not connected.
		Solid orange	The port is connected at 10/100 Mbps.
		Blinking orange	The port is receiving or sending traffic at 10/100 Mbps.
		Solid green	The port is connected at 1000 Mbps.
		Blinking green	The port is receiving or sending traffic at 1000 Mbps.

2 Preparation before Installation

2.1 Safety Suggestions



To avoid personal injury and equipment damage, please carefully read the safety suggestions before you install the RG-ES100 series switch.



The following safety suggestions do not cover all possible dangers.

2.1.1 Installation

- Keep the chassis clean and free from any dust.
- Do not place the equipment in a walking area.
- Do not wear loose clothes or accessories that may be hooked or caught by the device during installation and maintenance.
- Turn off all power supplies and remove the power sockets and cables before installing or uninstalling the device.

2.1.2 Movement

- Do not frequently move the device.
- When moving the device, note the balance and avoid hurting legs and feet or straining the back.
- Before moving the device, turn off all power supplies and dismantle all power modules.

2.1.3 Electricity

- Observe local regulations and specifications when performing electric operations. Relevant operators must be qualified.
- Before installing the device, carefully check any potential danger in the surroundings, such as ungrounded power supply, and damp/wet ground or floor.
- Before installing the device, find out the location of the emergency power supply switch in the room. First cut off the power supply in the case of an accident.
- Try to avoid maintaining the switch that is powered-on alone.
- Be sure to make a careful check before you shut down the power supply.
- Do not place the equipment in a damp location. Do not let any liquid enter the chassis.



Any nonstandard and inaccurate electric operation may cause an accident such as fire or electrical shock, thus causing severe even fatal damages to human bodies and equipment.





Direct or indirect touch through a wet object on high-voltage and mains supply may bring a fatal danger.



If a power supply system is equipped with a leakage protector (also referred to as "leakage current switch" or "leakage current breaker"), the rated leakage action current of each leakage protector is greater than twice of the theoretical maximum leakage current of all the power supplies in the system. For example, if a system is equipped with twenty identical power supplies, the leakage current of each power supply is equal to or less than 1.5mA, and the leakage

current of the system totals 30mA. A leakage protector with 30mA rated action current supports less than ten power supplies (that is, Action current of the leakage protector/2/Maximum leakage current of each power supply = $30/2/1.5=10$). In other words, the leakage protector with 30mA rated action current supports no more than ten power supplies. In this case, the twenty power supplies in the system require at least two leakage protectors with 30mA rated action current and each leakage protector supports ten power supplies. If power supplies in a system differ in models, the rated leakage action current of each leakage protector divided by two is greater than the sum of maximum leakage current of all the power supplies. The rated leakage non-action current of a leakage protector shall be 50% of the leakage action current. Take a leakage protector with 30mA rated leakage action current as an example. The rated leakage non-action current shall be 15mA. When the leakage current is below 15mA, the protector shall not act. Otherwise, misoperation may easily occur due to high sensitivity and thus the leakage protector trips, devices are powered off, and services are interrupted.

 To guarantee personal safety, the rated leakage action current of each leakage protector in the system must be equal to or less than 30mA (human body safety current is 30mA). When twice of the total leakage current of the system is greater than 30mA, the system must be equipped with two or more leakage protectors.

 For the leakage current value of each power supply model, see the power supply model parameter table in Chapter 1.

2.1.4 Static Discharge Damage Prevention

To prevent damage from static electricity, pay attention to the following:

- Proper grounding of grounding screws on the back panel of the device.
- Indoor dust prevention.
- Proper humidity conditions.

2.1.5 Laser

The RG-ES126S-LP and RG-ES118S-LP switches support varying models of optical modules sold on the market which are Class I laser products. Improper use of optical modules may cause damage. Therefore, pay attention to the following when you use them:

- When a fiber transceiver works, ensure that the port has been connected with an optical fiber or is covered with a dust cap, to keep out dust and avoid burning your eyes.
- When the optical module is working, do not pull out the fiber cable and stare into the transceiver interface or you may hurt your eyes.

 Do not stare into any optical port under any circumstances, as this may cause permanent damage to your eyes.

2.2 Installation Site Requirements

To ensure the normal working and a prolonged durable life of the equipment, the installation site must meet the following requirements.

2.2.1 Ventilation

Maintain a minimum clearance of 100 mm (3.94 in.) around the device. After various cables have been connected, they should be arranged into bundles or placed on the cabling rack to avoid blocking the air inlets. It is recommended to clean the switch at regular intervals (like once every 3 months). Especially, avoid dust from blocking the screen mesh on the back of the cabinet.

2.2.2 Temperature and Humidity

To ensure the normal operation and prolong the service life of RG-ES100 series switch, you should keep proper temperature and humidity in the equipment room.

If the equipment room has temperature and humidity that do not meet the requirements for a long time, the equipment may be damaged.

- In an environment with high relative humidity, the insulating material may have bad insulation or even leak electricity. Sometimes the materials may suffer from mechanical performance change and metallic parts may get rusted.
- In an environment with low relative humidity, however, the insulating strip may dry and shrink. Static electricity may occur easily and endanger the circuit on the equipment.
- In an environment with high temperature, the equipment is subject to even greater harm, as its performance may degrade significantly and various hardware faults may occur.

Therefore, the ambient temperature and humidity of the RG-ES100 series switch must meet the requirements listed in Table 2-1.

Table 2-1 Temperature and Humidity Requirements of the RG-ES100 Series Switch

Temperature	Relative Humidity
0°C to 45°C (32°F to 113°F)	10% to 90%

- ⚠ The requirements for the sampling site of the temperature and humidity in the operating environment of the device are as follows:
 - ⚠ There is no protective plate at the front or back of the rack.
 - ⚠ The vertical height is 1.5 m above the floor.
 - ⚠ The distance from the front panel of the equipment is 0.4 m.

2.2.3 Cleanness

Dust poses a severe threat to the running of the equipment. The indoor dust falling on the equipment may be adhered by the static electricity, causing bad contact of the metallic joint. Such electrostatic adherence may occur more easily when the relative humidity is low, not only affecting the useful life of the equipment, but also causing communication faults. Table 2-2 shows the requirements for the dust content and granularity in the equipment room.

Table 2-2 Requirements for the Dust Content and Granularity in the Equipment Room

Dust	Unit	Density
Diameter≥0.5μm	Particles/m ³	≤3.5×10 ⁶
Diameter≥5μm	Particles/m ³	≤3×10 ⁴

Apart from dust, the salt, acid and sulfide in the air in the equipment room must also meet strict requirements, as such poisonous substances may accelerate the corrosion of the metal and the aging of some parts. The equipment room should be protected from the intrusion of harmful gases such as sulfur dioxide, sulfured hydrogen, nitrogen dioxide, and chlorine), whose requirements are listed in Table 2-3.

Table 2-3 Requirements for Harmful Gases in the Equipment Room

Gas	Average (mg/m ³)	Maximum (mg/m ³)
SO ₂	0.3	1.0
H ₂ S	0.1	0.5
NO ₂	0.5	1.0
Cl ₂	0.1	0.3



Both average and maximum value are measured for a week. The switch cannot be placed in the environment with the maximum density for over 30 minutes every day. ..

2.2.4 Interference Resistance

The switch is vulnerable to external interface caused by capacity coupling, inductance coupling, electromagnetic wave radiation, common impedance (including grounding system) coupling and conducting wires (including power cords, signal and output wires). Therefore, the following points should be noted:

- The AC power supplying system is the TN system. The single-phase three-wire socket with protecting grounding must be used as the socket for the power supply to enable the device's upper filter circuit to effective filter the power interface.
- The switch should be far from high-power radio transmitting stations, radar stations and high-frequency and large-current devices.
- Electromagnetic shielding methods should be applied when necessary, such as using the shielded cable as the interface cable.
- Cables must be connected to interfaces inside the room to prevent damage to the device's signal ports caused by over-voltage and over-current generated by thunder and lightning.

2.2.5 Grounding

A good grounding system is the basis for the stable and reliable operation of the RG-ES100 series switch. It is the chief condition to prevent lightning stroke and resist interference. Please carefully check the grounding conditions on the installation site according to the grounding requirements, and perform grounding operations properly as required.



Effective grounding of the switch is an important guarantee for lightning protection and interference resistance. Therefore, connect the grounding line of the switch properly.



The grounding cable is customer supplied.

Safety Grounding

The equipment using AC power supply must be grounded by using the yellow/green safety grounding cable. Otherwise, when the insulating resistance decreases the power supply and the enclosure in the equipment, electric shock may occur.



The building must provide protective grounding connection to ensure that the device is connected to the protection location.

- ⚠ The installation and maintenance personnel must check whether the A.C. socket is well connected to the protection location of the building, if not, they should use a protective grounding wire to connect the grounding end of the A.C. socket to the building's protection location.
- ⚠ The power supply socket must be installed in a place that is near to the device and where users can operate the device easily.
- ⚠ Before the installation of the device, make sure that ground connection is connected at first and disconnected finally.
- ⚠ The sectional area of the protective grounding wire should be at least 0.75 mm^2 (18 AWG).
- ⚠ Use the 3-core power supply line. The sectional area of each pin should be at least 0.75 mm^2 or 18 AWG.

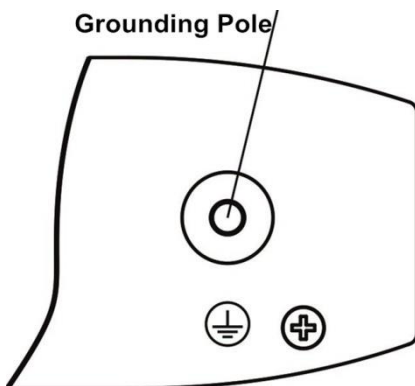
Lightning Grounding

The lightning protection system of a facility is an independent system that consists of the lightning rod, downlead conductor and the connector to the grounding system, which usually shares the power reference ground and yellow/green safety cable ground. The lightning discharge ground is for the facility only, irrelevant to the equipment.

EMC Grounding

The grounding required for EMC design includes shielding ground, filter ground, noise and interference suppression, and level reference. All the above constitute the comprehensive grounding requirements. The resistance of earth wires should be less than 1 ohm. The RG-ES100 series switch back plane is reserved with one grounding pole, as shown in Figure 2-1.

Figure 2-1 Grounding of RG-ES100



2.2.6 Lightning Resistance

When the AC power cable is imported outdoors and directly connected to the power port of the RG-ES100 series switch, lightning line bank should be adopted to prevent the switch from being hit by lightning shocks. Usage of the lightning line bank: Connect the mains supply AC cable to the lightning line bank. Then, connect the switch to the lightning line bank. This can help to prevent the current of high-voltage lightning from passing the switch directly through the mains supply cable to a certain extent.

- ⚠ The lightning line banks are not provided and should be purchased by users as required.

2.2.7 EMI

Electro-Magnetic Interference (EMI), from either outside or inside the equipment or application system, affects the system in the conductive ways such as capacitive coupling, inductive coupling, and electromagnetic radiation.

There are two types of electromagnetic interference: radiated interference and conducted interference, depending on the type of the transmission path.

When the energy, often RF energy, from a component arrives at a sensitive component via the space, the energy is known as radiated interference. The interference source can be either a part of the interfered system or a completely electrically isolated unit. Conducted interference results from the electromagnetic wire or signal cable connection between the source and the sensitive component, along which cable the interference conducts from one unit to another. Conducted interference often affects the power supply of the equipment, but can be controlled by a filter. Radiated interference may affect any signal path in the equipment and is difficult to shield.

- For the AC power supply system TN, single-phase three-core power socket with protective earthing conductors (PE) should be adopted to effectively filter out interference from the power grid through the filtering circuit.
- The grounding device of the switch must not be used as the grounding device of the electrical equipment or anti-lightning grounding device. In addition, the grounding device of the switch must be deployed far away from the grounding device of the electrical equipment and anti-lightning grounding device.
- Keep the equipment away from high-power radio transmitter, radar transmitting station, and high-frequency large-current device.
- Measures must be taken to shield static electricity.
- Interface cables should be laid inside the equipment room. Outdoor cabling is prohibited, avoiding damages to device signal interfaces caused by over-voltage or over-current of lightning.


2.3 Installation Tools

Table 2-4 Installation Tools

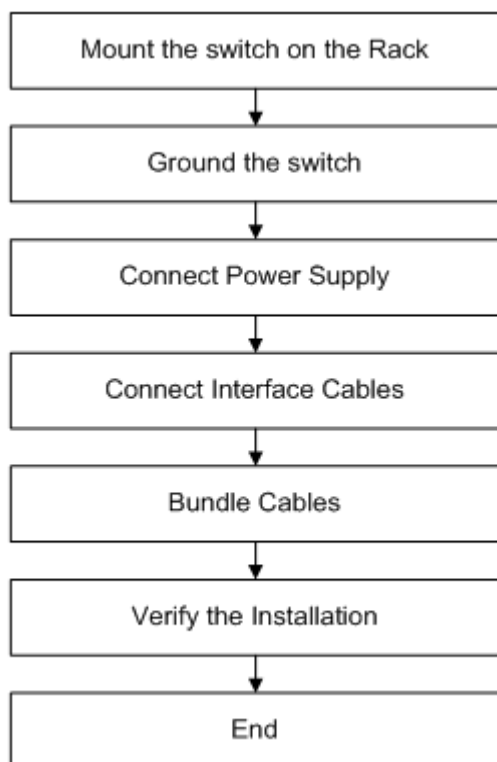
Common Tools	Phillips screwdriver, cables, bolts, diagonal pliers, straps
Special Tools	Anti-static wrist strap
Meters	Multimeter

 The tool kit is customer-supplied.

3 Product Installation

 Please ensure that you have carefully read Chapter 2.

3.1 Installation Flowchart



3.2 Confirmations before Installation

Before installation, please confirm the following points:

- Whether ventilation requirements are met for the switch
- Whether the requirements of temperature and humidity are met for the switch
- Whether power cables are already laid out and whether the requirements of electrical current are met
- Whether related network adaption lines are already laid out

3.3 Installing the RG-ES100

Precautions

During installation, note the following points:

- Connect the power cables of different colors to the corresponding grounding posts.

- Ensure that the interface of the power supply cable is well connected to the power interface of the device. The power cables must be protected using power cable retention clips after they are connected to the device.
- Do not place any articles on the RG-ES100 series switch.
- Maintain a minimum clearance of 100 mm (3.94 in.) around the device. Do not stack the devices.
- The switch should be located at places free from the large power radio launch pad, radar launch pad, and high-frequency large-current devices. If necessary, electromagnetic shielding should be adopted. For example, use interface cables to shield cables.
- 100-meter network cables should be laid inside the equipment room and outdoor cabling of such cables is prohibited. If outdoor cabling is necessary, take relevant measures for lightning protection.

3.3.1 Mounting the Switch to a Standard 19-inch Rack

The RG-ES106D-P and RG-ES110D-P series switches do not support rack mounting.

The RG-ES126S-LP, RG-ES118S-LP, RG-ES116G and RG-ES124GD series switches follow the EIA standard dimensions and can be installed in 19-inch rack.

Step 1: Attach the mounting brackets to the switch with the supplied screws, as shown in Figure 3-1.

Figure 3-1 Attaching the Mounting Bracket to RG-ES126S-LP/RG-ES118S-LP

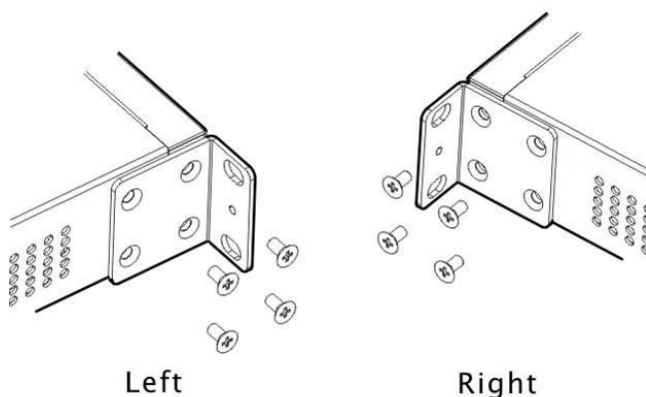
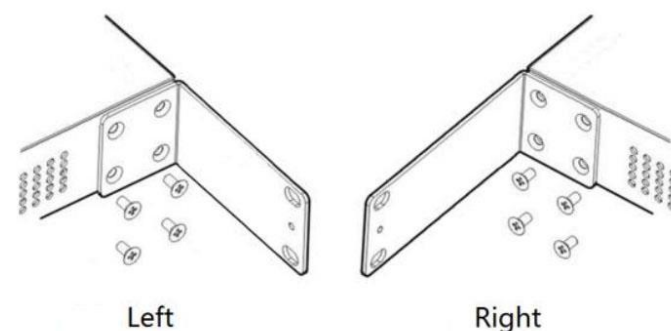
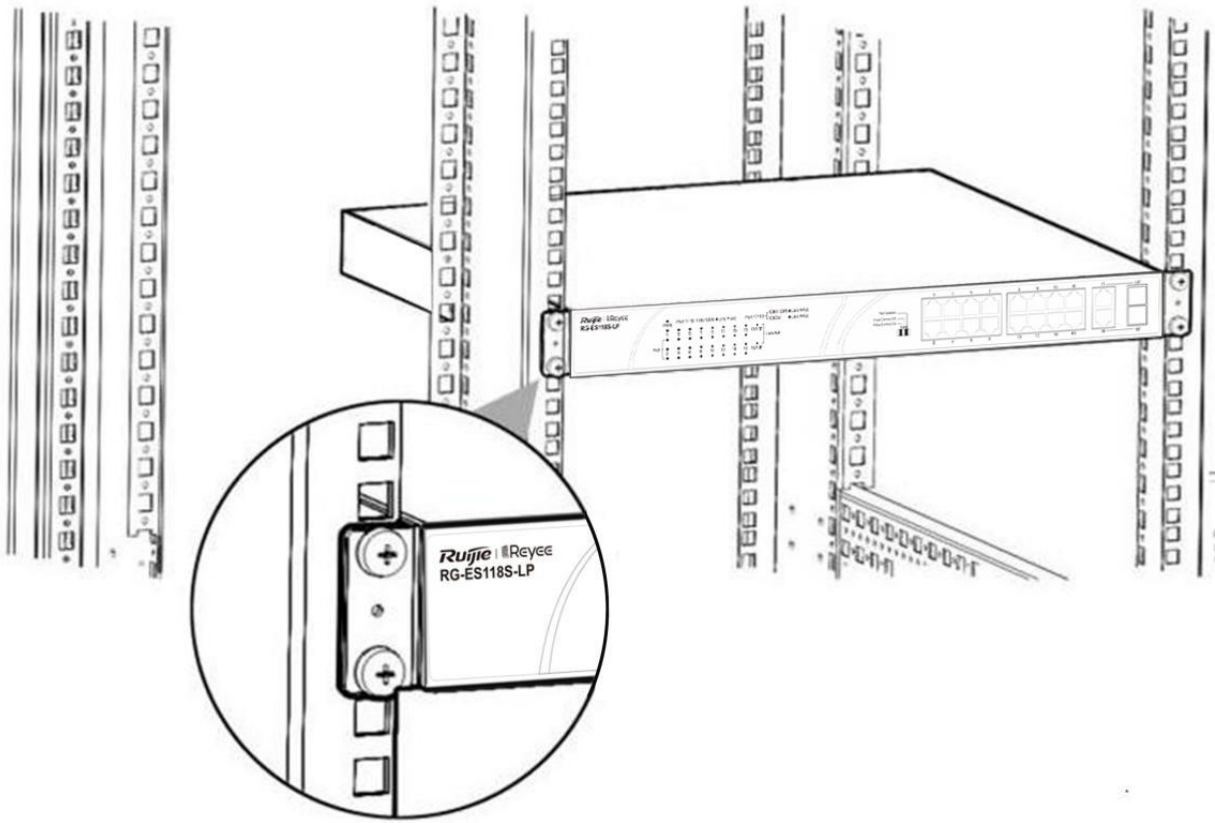


Figure 3-2 Attaching the Mounting Bracket to RG-ES116G/RG-ES124GD

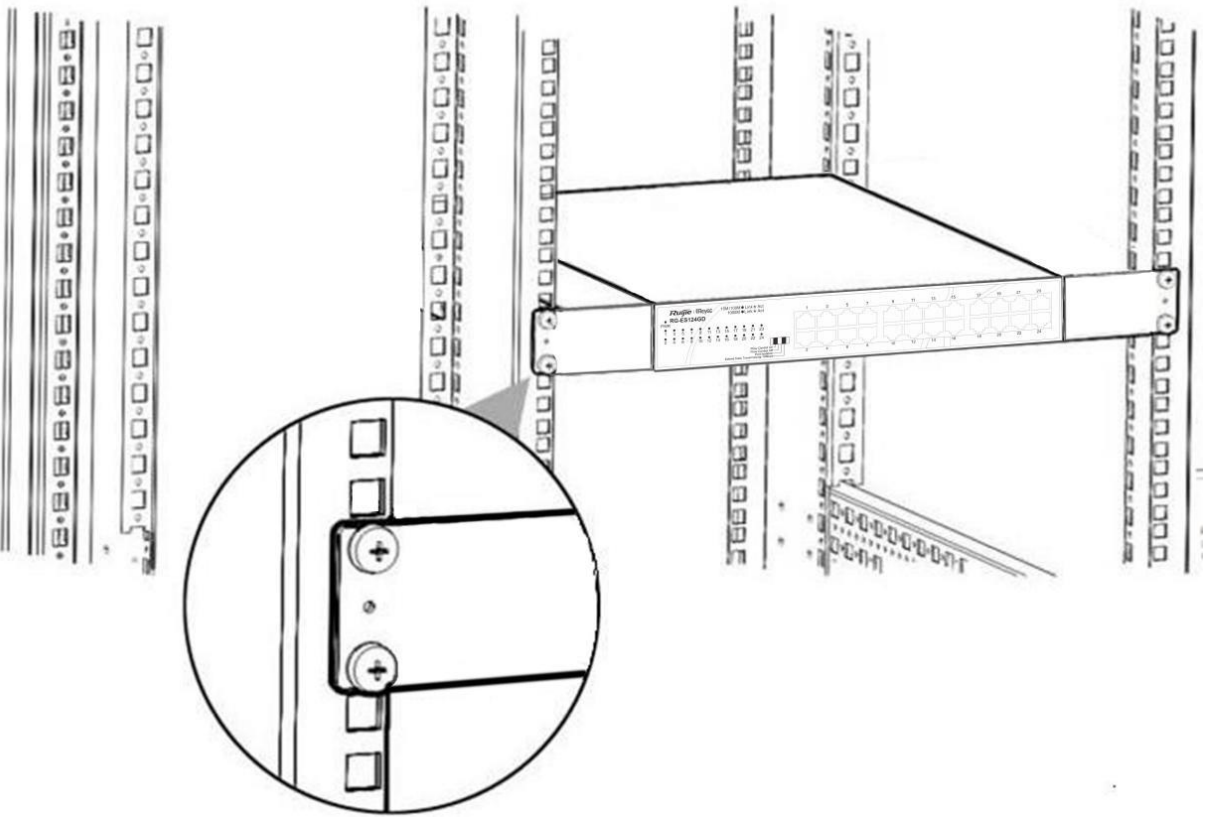


Step 2: Use the supplied screws and cage nuts to securely attach the mounting brackets to the rack, as shown in Figure 3-3.

Figure 3-3 Attaching the Brackets to the Rack



(1)



(2)

3.3.2 Mounting the Switch on the Wall

RG-ES106D-P and RG-ES110D-P can be mounted on the wall. (Mounting screws and wall anchors are customer supplied.)

In actual installation, users need to determine the size and depth of the two mounting holes on the wall based on the sizes of wall anchors and screws. Ensure that the wall anchors can be inserted into the holes, only the outer edges of the wall anchors are left outside the wall, and screws can be tightly fastened to the wall.

The following process takes RG-ES110D-P as an example. The steps of mounting the switch on the wall are as follows:

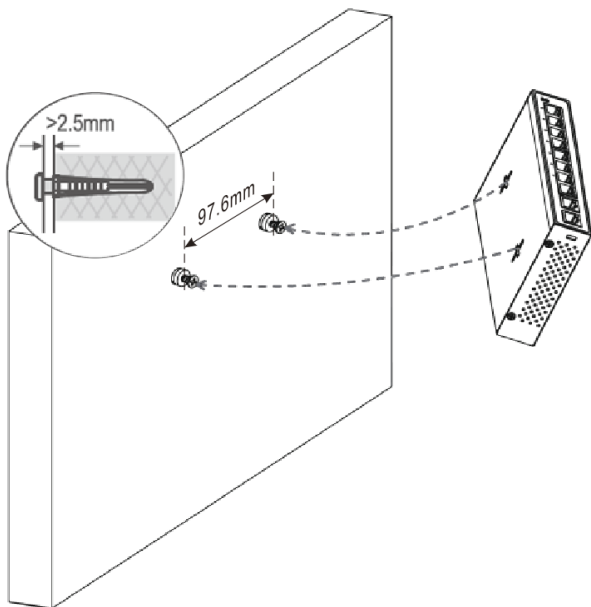
Step 1: As shown in Figure 3-1, drill two holes 97.6 mm (3.84 in.) far away from each other, and the line of connecting the two holes is horizontal.

Step 2: Insert wall anchors into the holes and ensure that the outer edges of the wall anchors are aligned with the wall.

Step 3: Put screws (ST4.2x20 recommended) into the wall anchors and ensure that the distance between the inner side of the screw head and the outer edge of the wall anchors not be smaller than 2.5 mm (0.10 in.) so that the device can be securely mounted on the screws.

Step 4: Align the two mounting holes on the bottom of the chassis of the device with the screws, and then fasten the device on the screws.

Figure 3-4 Mounting the Switch on the Wall

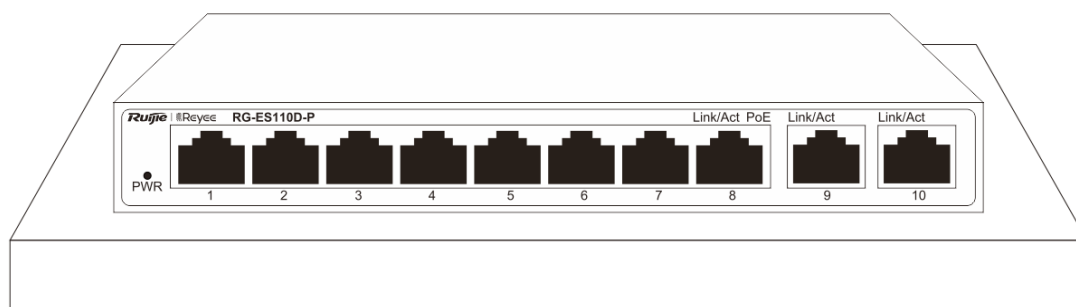


Suitable for mounting on concrete or non-combustible surface only.

3.3.3 Mounting the Switch on a Table


The following process takes RG-ES110D-P as an example. Place the switch on a table, as shown in Figure 3-2.

Figure 3-5 Placing the Switch on a Table



 The device must be installed and operated in the place that can restrict its movement.

3.4 Checking after Installation

 Before checking the installation, switch off the power supply so as to avoid any personal injury or damage to the component due to connection errors.

- Check that the ground line is connected.
- Check that the cables and power input cables are correctly connected.
- Check that all interface cables are laid out inside the equipment room. In the case of external cabling, check that the lightning resistance socket or network interface lightning protector is connected.
- Maintain a minimum clearance of 100 mm (3.94 in.) around the device.

3.5 Adding Unmanaged Device to Topology

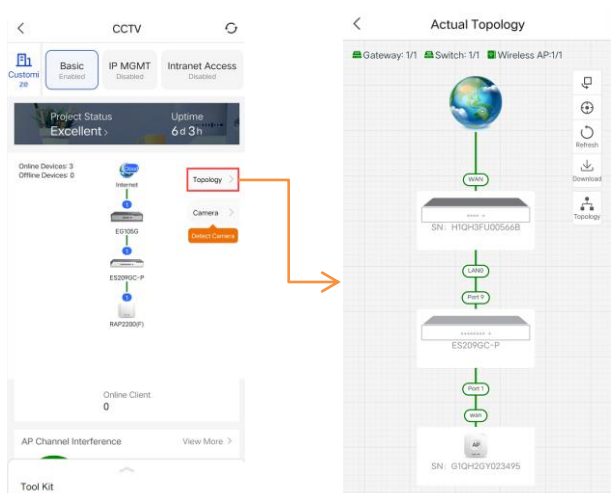
 Note: There must be devices that can be managed in the network, including Reyee EG or ES2/NBS switches.

Scenarios:

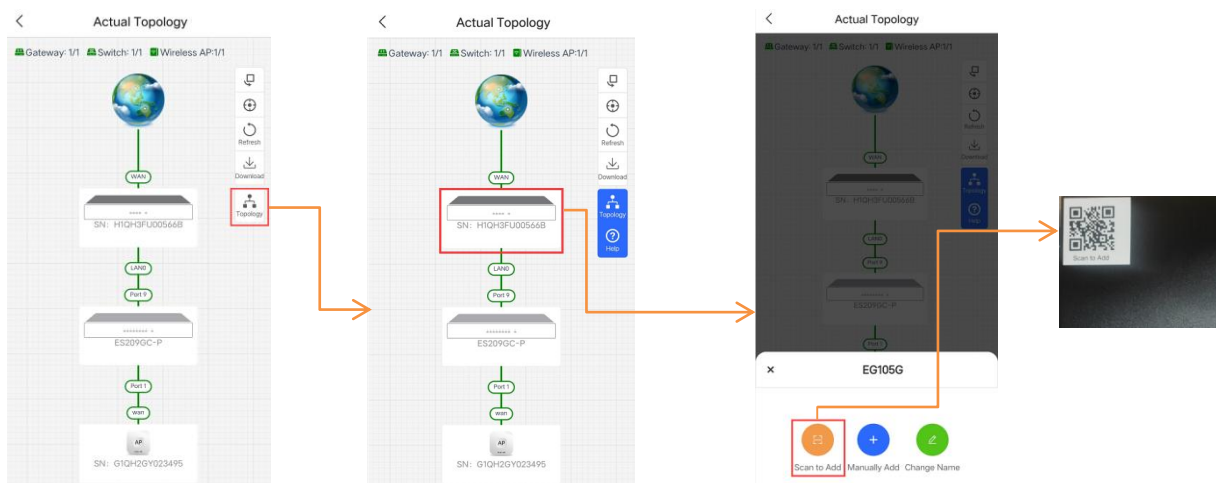
- Add a new unmanaged switch: Select its uplink device, and scan the QR-code on the switch or manually add it to the topology.
- If the unmanaged switch is already added to the topology and displayed as a virtual device: Select the virtual device, and scan its QR-code or manually enter its information to the topology.

3.5.1 Scanning QR-code of Unmanaged Device

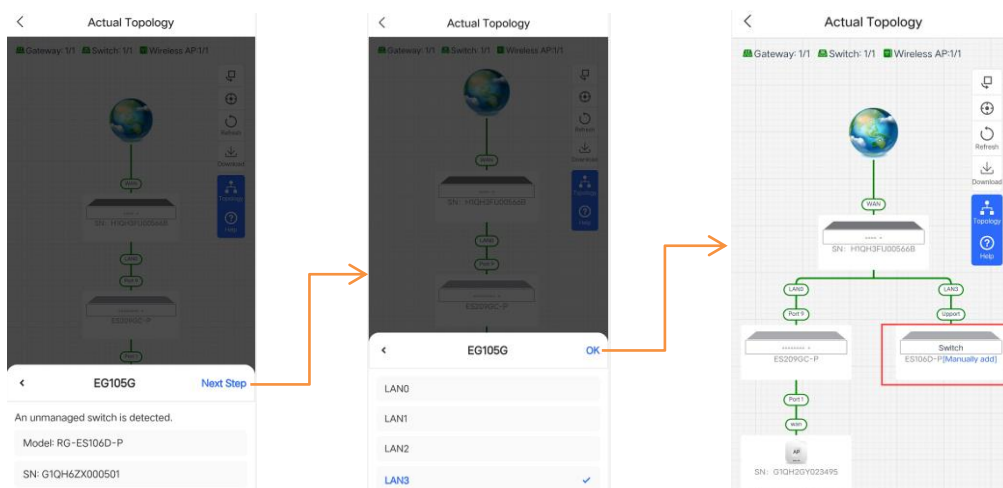
1. Tap **Topology** to open the topology page.



2. Tap the **Topology** button, and select the existing managed device. To add an unmanaged downlink switch by scanning its QR-code, select **Scan to Add**.

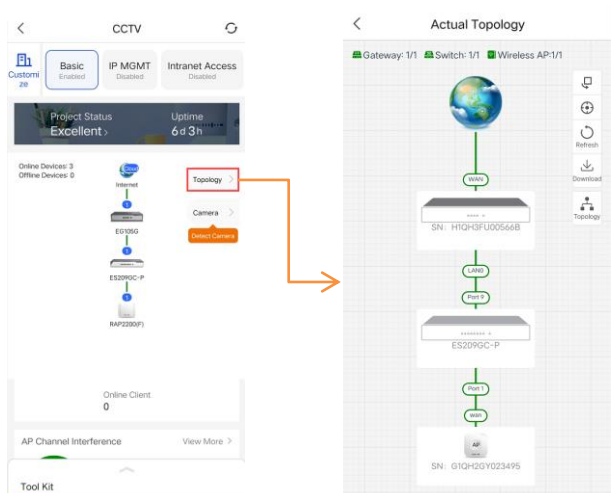


3. After the device is detected, select its uplink port. And the device is added successfully.

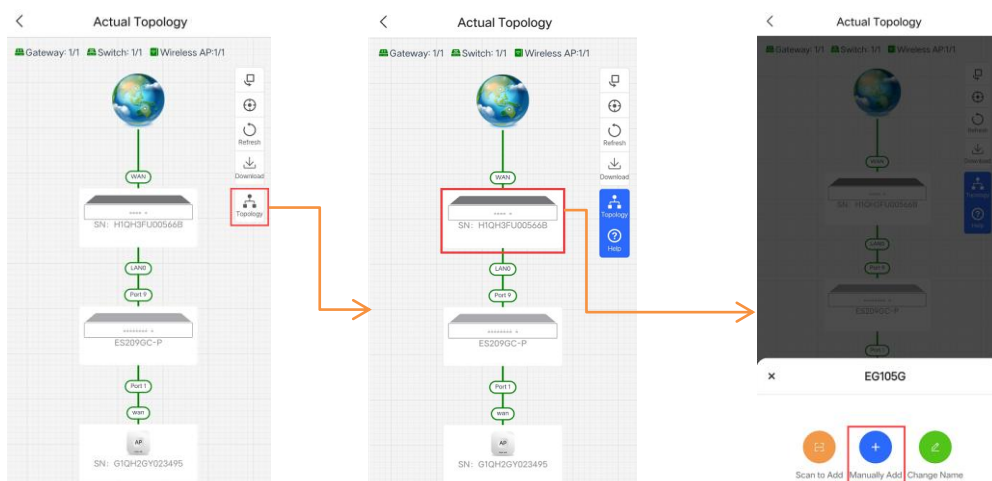


3.5.2 Adding Unmanaged Device Manually

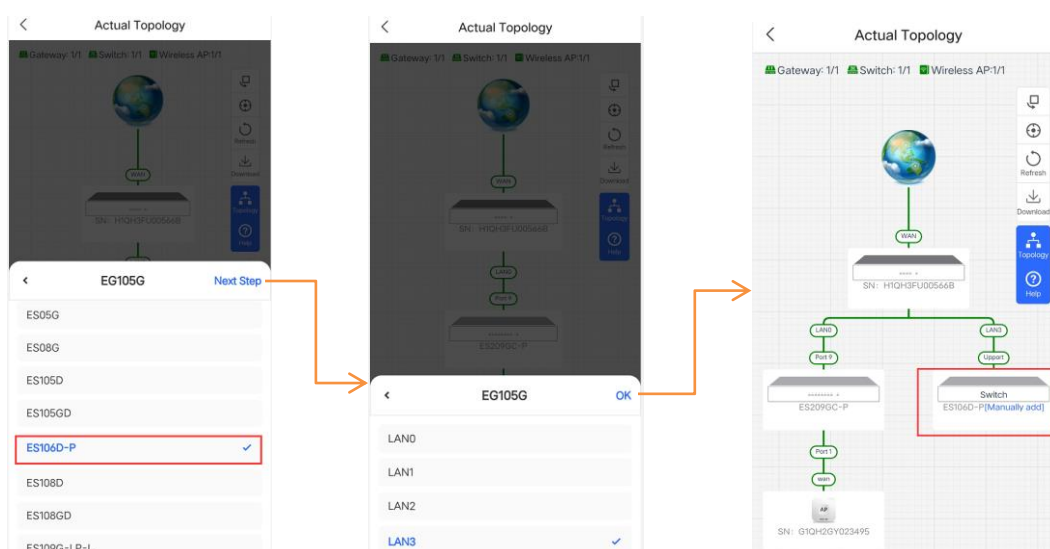
1. Tap **Topology** to enter the topology page.



2. Tap the **Topology** button, and select the existing managed device. To add an unmanaged downlink switch manually, select **Manually Add**.



3. Select the device model and its uplink port, and the device is added successfully.



4 System Debugging

4.1 Startup Check

4.1.1 Checking before the Device is Powered on

- The switch is fully grounded.
- The power cable is correctly connected.
- The power supply voltage complies with the requirement of the switch.

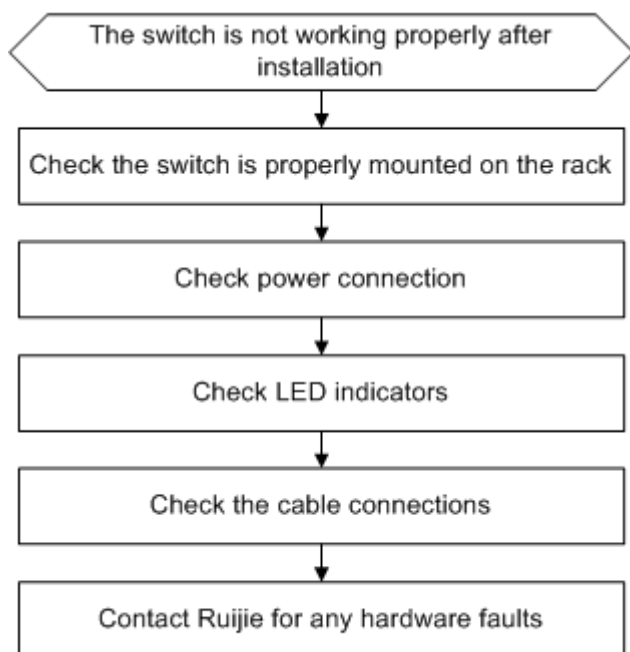
4.1.2 Checking after Program Startup (Recommended)

After power-on, you are recommended to perform the following checks to ensure the normal operation of follow-up configurations.

- Check whether the status of the switch indicator is normal.
- Check whether the service interface forwards data normally.

5 Maintenance and Troubleshooting

5.1 General Troubleshooting Procedure



5.2 Troubleshooting Common Faults

Symptom	Possible Causes	Solution
The status indicator is not on after the switch is started.	The power module does not work. The power cable is in loose contact.	Check whether the power socket at the equipment room is normal and whether the power cable is plugged in.
The RJ45 port is not in connectivity or it is erroneous in receiving/transmitting frames.	The connected twisted pair cable is faulty. The length of the cable exceeds 100 m. The port has special configuration that has no common working mode with the connected switch.	Replace the twisted pair cable. Check that the port configuration has the common working mode with the connected switch.
The fiber port cannot be connected.	The Rx and Tx ends are connected reversely. The interconnected optical module type does not match. The fiber type is not correct. The length of the optical fiber exceeds that rated of the optical module.	Switch the Rx and Tx ends of the optical fiber. Replace the optical module with one of the matched type. Replace the optical fiber with one of the appropriate type. Replace the optical fiber with one of the appropriate length.

Appendix A Connectors and Connection Media

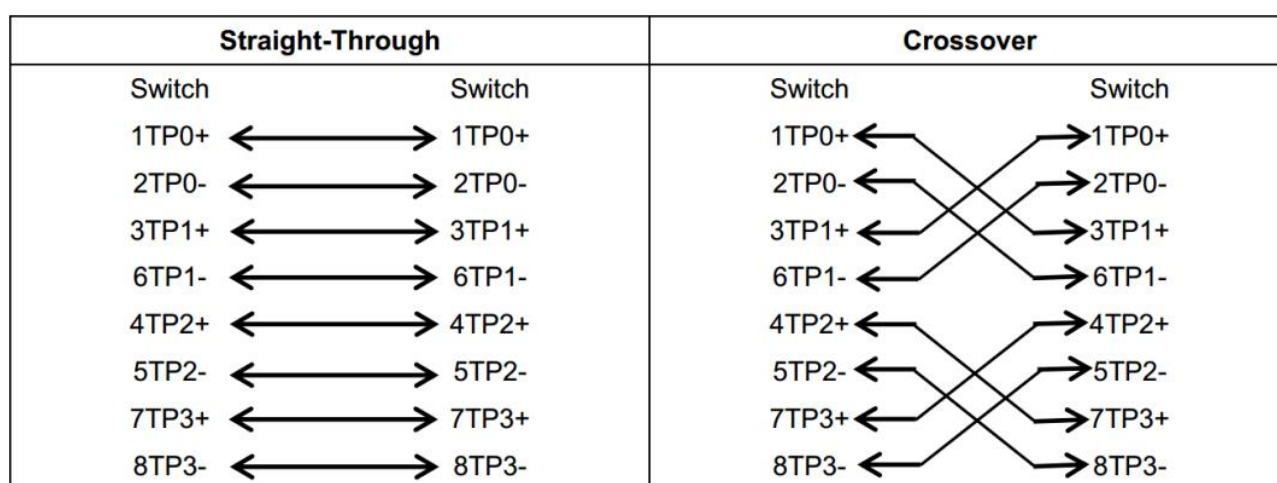
1000BASE-T/100BASE-TX/10BASE-T Ports

The 1000BASE-T/100BASE-TX/10BASE-T is a port that supports adaptation of three rates, and automatic MDI/MDIX Crossover at these three rates.

The 1000BASE-T complies with IEEE 802.3ab, and uses the cable of 100-ohm Category-5 or Supper Category-5 UTP or STP, which can be up to 100 m.

The 1000BASE-T port uses four pairs of wires for transmission, all of which must be connected. Figure A-1 shows the connections of the twisted pairs used by the 1000BASE-T port.

Figure A-1 Four Twisted Pairs of the 1000BASE-T



In addition to the above cables, the 100BASE-TX/10BASE-T can also use 100-ohm Category-3, 4, 5 cables for 10 Mbps, and 100-ohm Category-5 cables for 100 Mbps, both of which can be up to 100 m. Figure A-2 shows the pinouts of the 100BASE-TX/10BASE-T.

Figure A-2 Pinouts of the 100BASE-TX/10BASE-T

Pin	Socket	Plug
1	Input Receive Data+	Output Transmit Data+
2	Input Receive Data-	Output Transmit Data-
3	Output Transmit Data+	Input Receive Data+
6	Output Transmit Data-	Input Receive Data-
4,5,7,8	Not used	Not used

Figure A-3 shows the straight-through and crossover cable connections for the 100BASE-TX/10BASE-T.

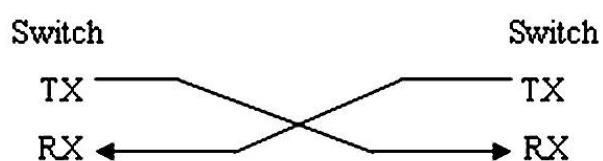
Figure A-3 Connections of the Twisted Pairs of the 100BASE-TX/10BASE-T

Straight-Through		Crossover	
Switch	Adapter	Switch	Switch
1 IRD+	1 OTD+	1 IRD+	1 OTD+
2 IRD-	2 OTD-	2 IRD-	2 OTD-
3 OTD+	3 IRD+	3 OTD+	3 IRD+
6 OTD-	6 IRD-	6 OTD-	6 IRD+

Optical Fiber Connection

For the optical fiber ports, select single-mode or multiple-mode optical fibers for connection according to the fiber module connected. The connection schematic diagram is shown in Figure A-4:

Figure A-4 Optical Fiber Connections

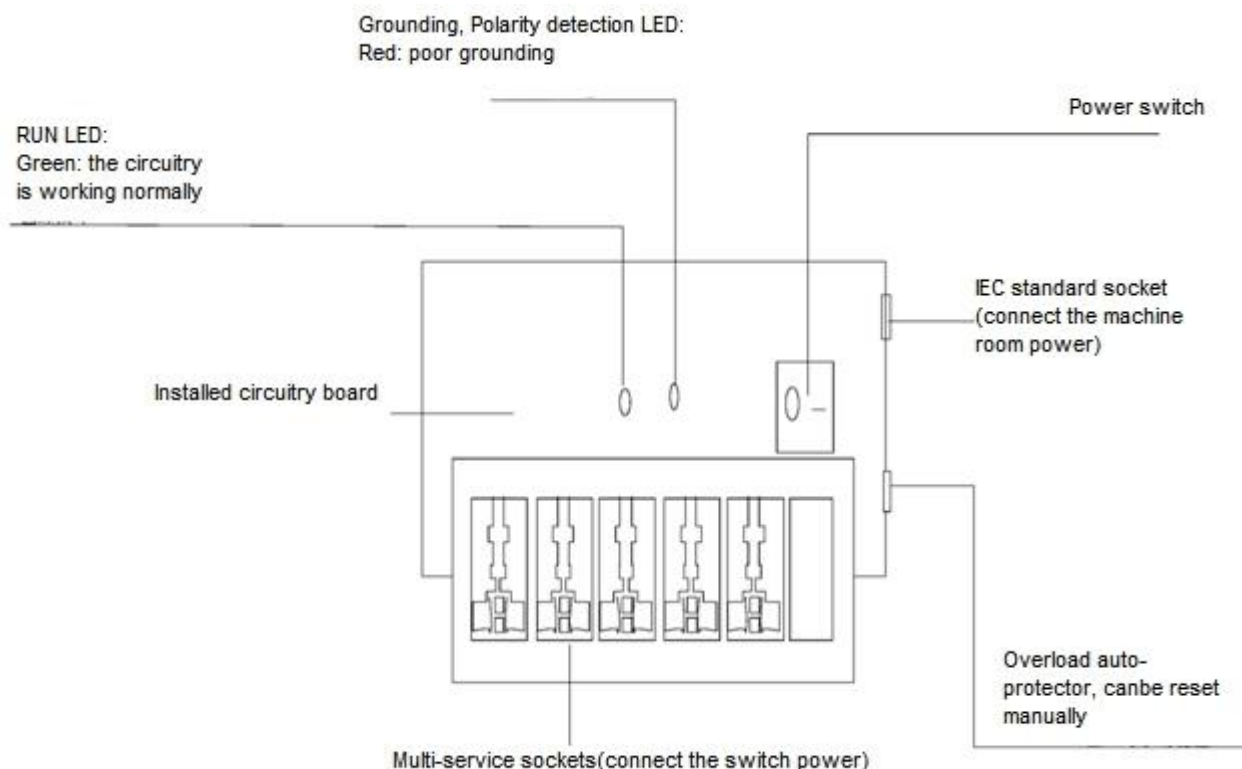


Appendix B Lightning Protection

Installing AC Power Arrester (lightning protection cable row)

The external lightning protection cable row shall be used on the AC power port to prevent the switch from being struck by lightning when the AC power cable is introduced from the outdoor and directly connected to the power port of the switch. The lightning protection cable row is fixed on the cabinet, operating table or the wall in the machine room using the line buttons and screws.

Figure B-1 Schematic Diagram for the Power Arrester



! The power arrester is not provided and the user shall purchase it to address the practical requirement.

Precautions for installation:

- Make sure that the PE terminal of the power arrester has been well-grounded;
- After connecting the switch AC power plug to the socket of the power arrester (lightning protection cable row), lightning protection function implements if the RUN LED is Green and the ALARM LED is OFF.
- If the ALARM LED on the power arrester is Red, you shall check what the reason is, poor grounding connection or the reversed connection of the Null and Live lines: Use the multimeter to check the polarity of the power socket for the arrester when the LED is Red, if the N line is on the left and the L line is on the right, the arrester PE terminal is not grounded; if the L line is on the left and the N line is on the right, the polarity of the arrester power cable shall be reversed; if the LED is still Red, it is confirmed that the arrester PE terminal has not been grounded.

Installing the Ethernet Port Arrester

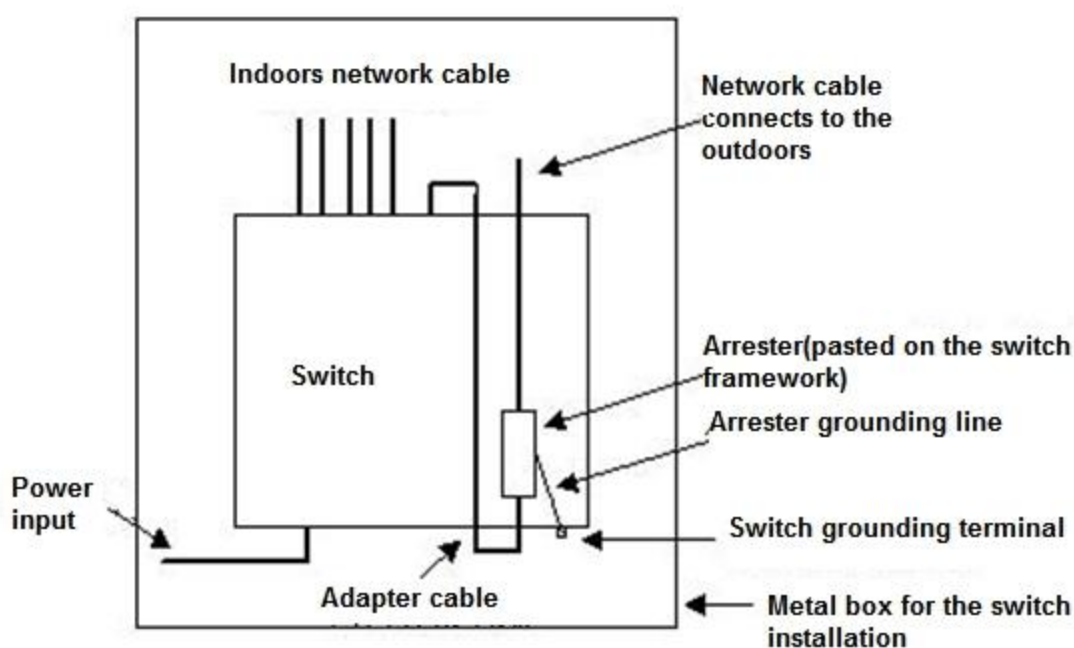
During the switch usage, the Ethernet port arrester shall be connected to the switch to prevent the switch damage by lightning before the outdoor network cable connects to the switch.

Tools: Cross or straight screwdriver, Multimeter, Diagonal pliers

Installation Steps:

1. Tear one side of the protection paper for the double-sided adhesive tape and paste the tape to the framework of the Ethernet port arrester. Tear the other side of the protection paper for the double-sided adhesive tape and paste the Ethernet port arrester to the switch framework. The paste location for the Ethernet port arrester shall be as close to the grounding terminal of the switch.
2. Based on the distance of the switch grounding terminal, cut the grounding line for the Ethernet port arrester and firmly tighten the grounding line to the grounding terminal of the switch.
3. Use the multimeter to check whether the grounding line for the arrester is in good contact with the switch grounding terminal and the framework.
4. According to the description on the Ethernet Port Arrester Hardware Installation Guide, connect the arrester using the adapter cable (note that the external network cable is connected to the end of IN, while the adapter cable connected to the switch is connected to the end of OUT) and observe whether the LED on the board is normal or not.
5. Use the nylon button to bundle the power cables.

Figure B-2 Schematic Diagram for the Ethernet port Arrester Installation



- ⚠ The Ethernet port arrester is only for the 10M/100M copper Ethernet ports with the RJ45 connector;
- ⚠ The Ethernet port arrester is not provided, the user can purchase them to address their own practical requirements. For the detailed information during the arrester installation, please refer to Ethernet Port Arrester Hardware Installation Guide, which contains the technical specification and the maintenance and installation of the arrester.

You may pay attention to the following conditions during the actual installation to avoid influencing the performance of the Ethernet port arrester:

- Reversed direction of the arrester installation. You shall connect the external network cable to the “IN” end and connect the switch Ethernet port to the “OUT” end.
- Poor arrester grounding. The length of the grounding line should be as short as possible to ensure that it is in good contact with the switch grounding terminal. Use the multimeter to confirm the contact condition after the grounding.
- Incomplete arrester installation. If there is more than one port connected to the peer device on the switch, it needs to install the arresters on all connection ports for the purpose of the lightning protection.

Appendix C Cabling Recommendations in Installation

When RG-ES100 series switches are installed in standard 19-inch cabinets, the cables are tied in the binding rack on the cabinet by the cabling rack, and top cabling or bottom cabling is adopted according to the actual situation in the equipment room. All cable connectors should be placed at the bottom of the cabinet in an orderly manner instead of outside the cabinet easy to touch. Power cables are routed beside the cabinet, and top cabling or bottom cabling is adopted according to the actual situation in the equipment room, such as the position of the DC power distribution box, AC socket, or lightning protection box.

Requirement for the minimum cable bend radius

- The bend radius of a power cord, communication cable, and flat cable should be greater than five times their respective diameters. The bend radius of these cables that often bend or suffer removal/insertion should be greater than seven times their respective diameters.
- The bend radius of a common coaxial cable should be greater than seven times its diameter. The bend radius of this type of cables that often bend or suffer removal/insertion should be greater than 10 times its diameter.
- The bend radius of a high-speed cable (SFP cable, for example) should be greater than five times its diameter. The bend radius of this type of cables that often bend or suffer removal/insertion should be greater than 10 times its diameter.

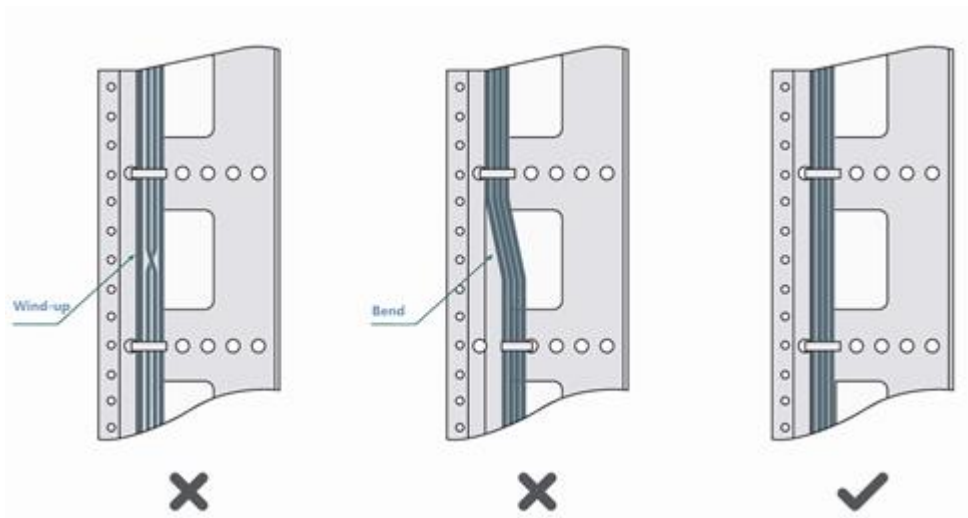
Requirement for the minimum fiber bend radius

- The diameter of a fiber tray to hold fibers cannot be less than 25 times the diameter of the fiber.
- When moving an optical fiber, the bend radius of the fiber should be equal to or greater than 20 times the diameter of the fiber.
- During cabling of an optical fiber, the bend radius of the fiber should be equal to or greater than 10 times the diameter of the fiber.

Precautions for Bundling up Cables

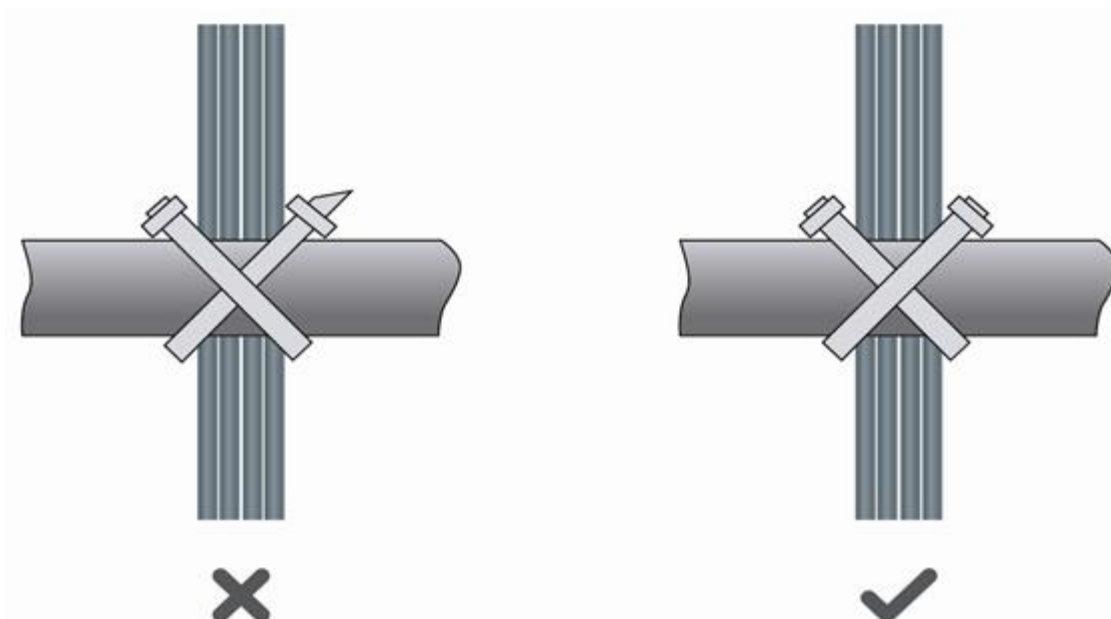
- Before bundling cables, correctly mark labels and stick the labels to cables where appropriate.
- Cables should be neatly and properly bundled, as shown in Figure D-1.

Figure C-1 Bundling Up Cables (1)



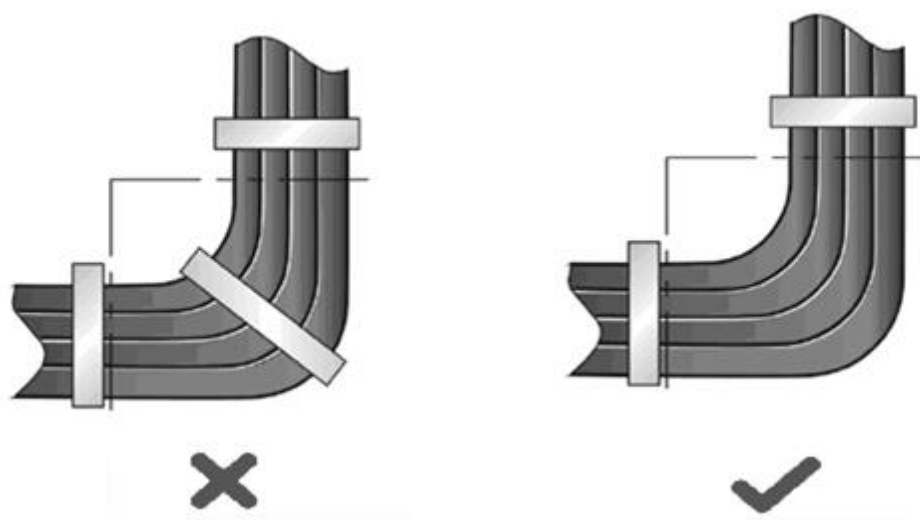
- Cables of different types (such as power cords, signal cables, and grounding cables) should be separated in cabling and bundling. When they are close, crossover cabling can be adopted. In the case of parallel cabling, power cords and signal cables should maintain a space equal to or greater than 30 mm.
- The binding rack and cabling slot inside and outside the cabinet should be smooth, without sharp corners.
- The metal hole traversed by cables should have a smooth and fully rounding surface or an insulated lining.
- Proper buckles should be selected to bundle up cables. It is forbidden to connect two or more buckles to bundle up cables.
- After bundling up cables with buckles, you should cut off the remaining part. The cut should be smooth and trim, without sharp corners, as shown in Figure D-2.

Figure C-2 Bundling Up Cables (2)



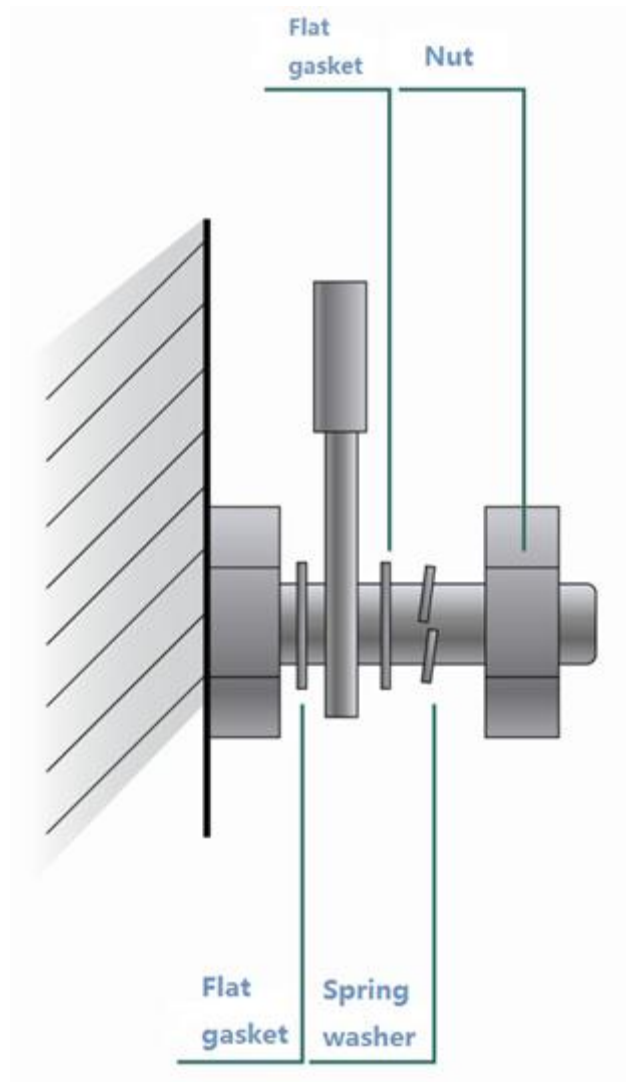
- When cables need to bend, you should first bundle them up. However, the buckle cannot be bundled within the bend area. Otherwise, significant stress may be generated in cables, breaking cable cores. As shown in Figure D-3.

Figure C-3 Bundling Up Cables (3)



- Cables not to be assembled or remaining parts of cables should be folded and placed in a proper position of the cabinet or cabling slot. The proper position indicates a position that will not affect device running or cause device damage or cable damage during commissioning.
- The power cords cannot be bundled on the guide rails of moving parts.
- The power cables connecting moving parts such as door grounding wires should be reserved with some access after assembled. When the moving part reaches the installation position, the remaining part should not touch heat sources, sharp corners, or sharp edges. If heat sources cannot be avoided, high-temperature cables should be used.
- When using screw threads to fasten cable terminals, the bolt or screw must be tightly fastened, and anti-loosening measures should be taken, as shown in Figure D-4.

Figure C-4 Cable Fastening



- The hard power cable should be fastened by the terminal connection area to prevent stress.
- Do not use self-tapping screws to fasten terminals.
- Power cables of the same type and in the same cabling direction should be bundled up into cable bunches, with cables in cable bunches clean and straight.
- Binding by using buckles should be performed according to Table C-1.

Cable Bunch Diameter (mm)	Binding Space (mm)
10	80-150
10-30	150-200
30	200-300

- No knot is allowed in cabling or bundling.
- For solder-less terminal blocks (such as air switches) of the cold pressing terminal type, the metal part of the cold pressing terminal should not be exposed outside the terminal block when assembled

Appendix D Site Selection

- The machine room should be at least 5km away from the heavy pollution source such as the smelter, coal mine and thermal power plant, 3.7km away from the medium pollution source such as the chemical industry, rubber industry and electroplating industry, and 2km away from the light pollution source such as the food manufacturer and leather plant. If the pollution source is unavoidable, the machine room should be located on the windward side of the pollution source perennially with advanced protection.
- The machine room should be at least 3.7km away from the sea or salt lake. Otherwise, the machine room must be sealed, with air conditioner installed for temperature control. Saline soil cannot be used for construction. Otherwise, you should select devices with advanced protection against severe environment.
- Do not build the machine room in the proximity of livestock farms. Otherwise, the machine room should be located on the windward side of the pollution source perennially. The previous livestock house or fertilizer warehouse cannot be used as the machine room.
- The machine room should be firm enough to withstand severe weather conditions such as windstorm and heavy rain as well as away from dust. If the dust is unavoidable, keep the door and window away from the pollution source.
- The machine room should be away from the residential area. Otherwise, the machine room should meet the construction standard in terms of noise.
- Make sure the air vent of the machine room is away from the sewage pipe, septic tank, and sewage treatment tank. Keep the machine room under positive pressure to prevent corrosive gas from entering the machine room to corrode components and circuit boards. Keep the machine room away from industrial boiler and heating boiler.
- The machine room had better be on the second floor or above. Otherwise, the machine room floor should be 600mm higher than the highest flood level ever recorded.
- Make sure there are no cracks or holes in the wall and floor. If there are cable entries in the wall or window, take proper sealing measures. Ensure that the wall is flat, wear-resistant, and dust-free, which should be up to the standard for flame retarding, soundproofing, heat absorption, dust reduction, and electromagnetic shielding.
- Keep the door and the window closed to make the machine room sealed.
- The steel door is recommended for soundproofing.
- Sulfur-containing materials are forbidden.
- Pay attention to the location of the air conditioner. Keep the air conditioner from blowing wind straight toward the device or blowing water drops from the window or air vent toward the device.