

T-Touch
Add Value to Weighing

PA Series Label Printing Scale

2021.1



Model



T-Touch PEA10
Economic

Economic Product with Modern
Technology



T-Touch PA10
Standard

High-end Product with Modern
Technology



T-Touch PA15
Advantage

Big display for good experience



T-Touch PA15/PA18
Self-service

Operates with No Cost

Content

1 Models

2 Main Features

3 T-Touch Central Management Software

4 Specification

5 Application



Models

T-Touch PA Series

T-Scale

T-Touch PEA10 Economic Model



Two Types for Selection

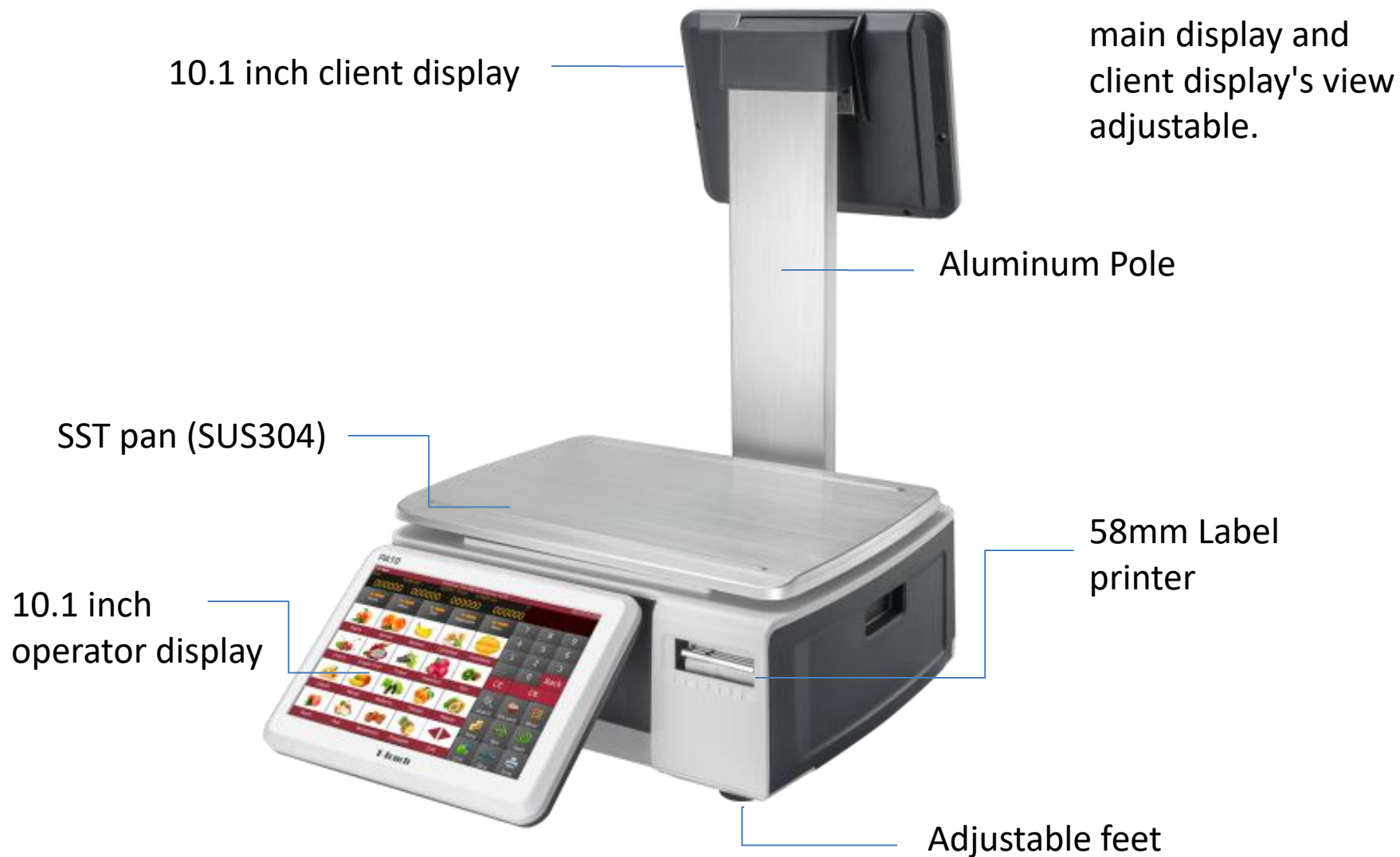


Pole



Flat

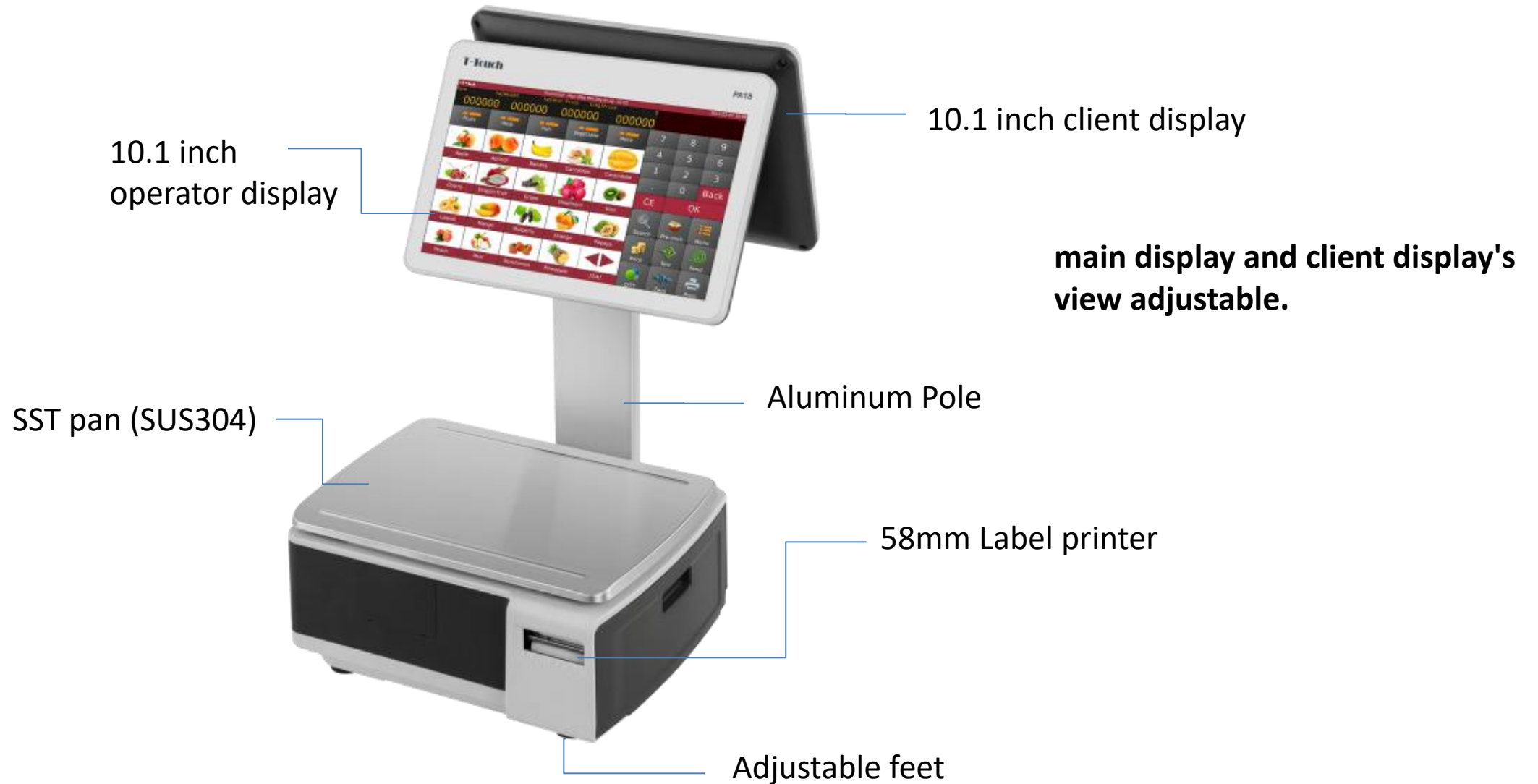
T-Touch PA10 Standard Model



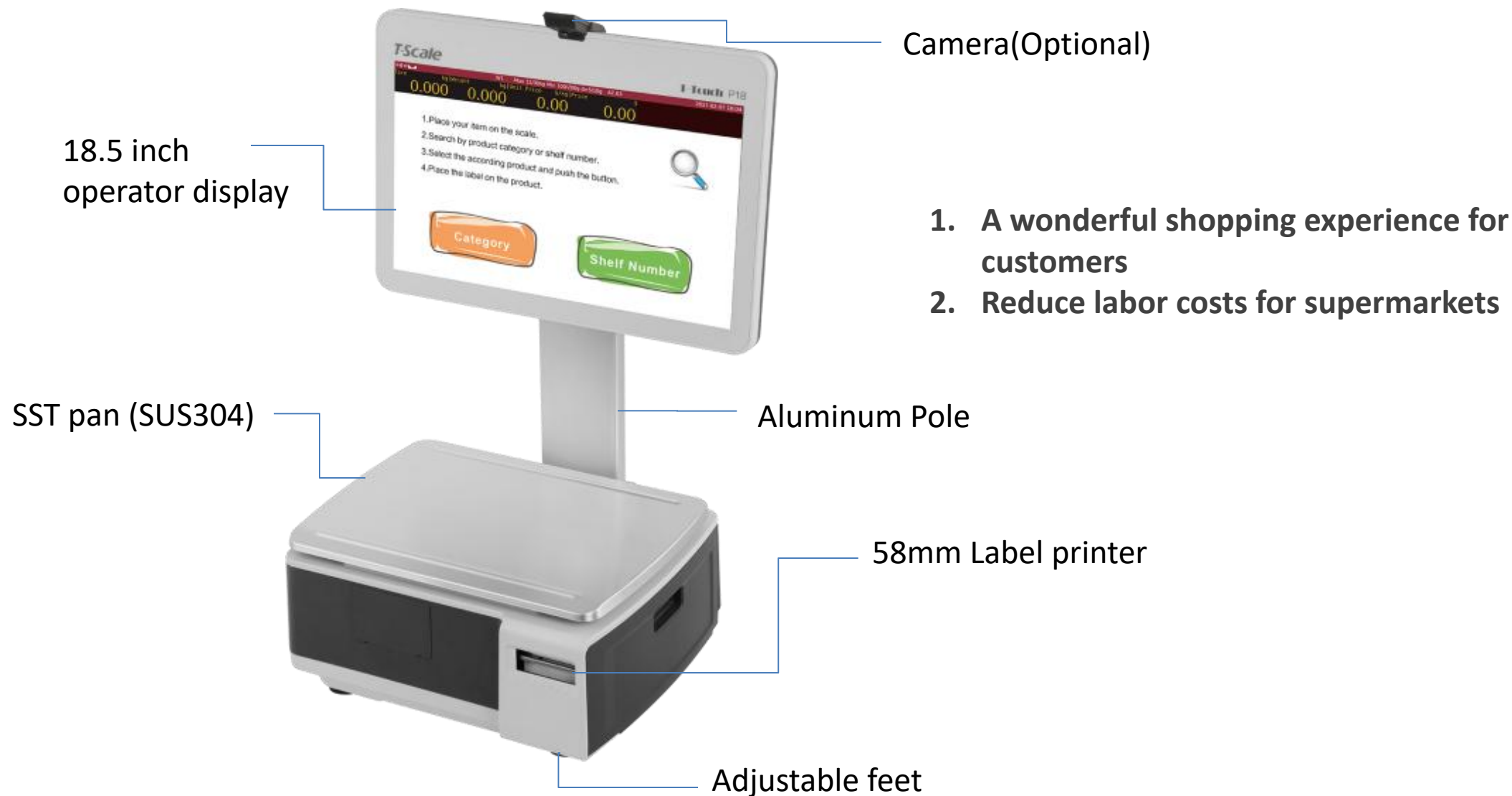
Two Types for Selection



T-Touch PA15 Standard Model



T-Touch PA18 Self-Service Model



Features

T-Touch P Series

Independent
development
motherboard

Touch Screen

Advertising
Customer
Display

Embedded
Open System

Cassette Type
Label Printer

Networking
Operation

Abundant
Interface

T-Scale

Independent development motherboard

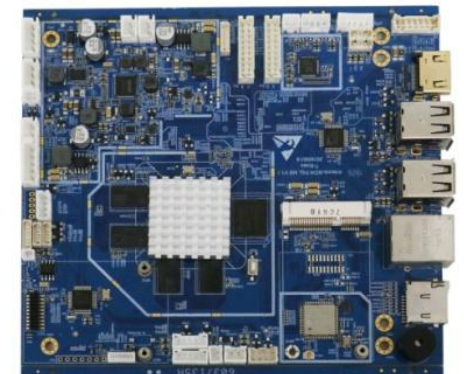


- Independently developed special motherboard for weighing instrument
- Linux embedded operating system
- A17 processor: Quad-core 1.6GHz
- RAM memory: 2 GB
- Flash memory: 16 GB
- Low hardware cost
- System stability
- Low energy consumption



Powerful ARM quad-core

Using Rockchip™ ARM Cortex-A17 quad-core RK3288 CPU
Main frequency supports up to 1.8GHz MP4 graphics processor, supports OpenGL ES1.1/2.0/3.0 Running points exceeding 50,000 points, with such powerful performance, can it be called a high-performance processor



Embedded Open System

Linux embedded open system, with a perfect docking interface, can be used by third-party software vendors and system vendors to quickly dock or develop application software.



Professional
weighing hardware

+



Linux 4.4 operation
system

+



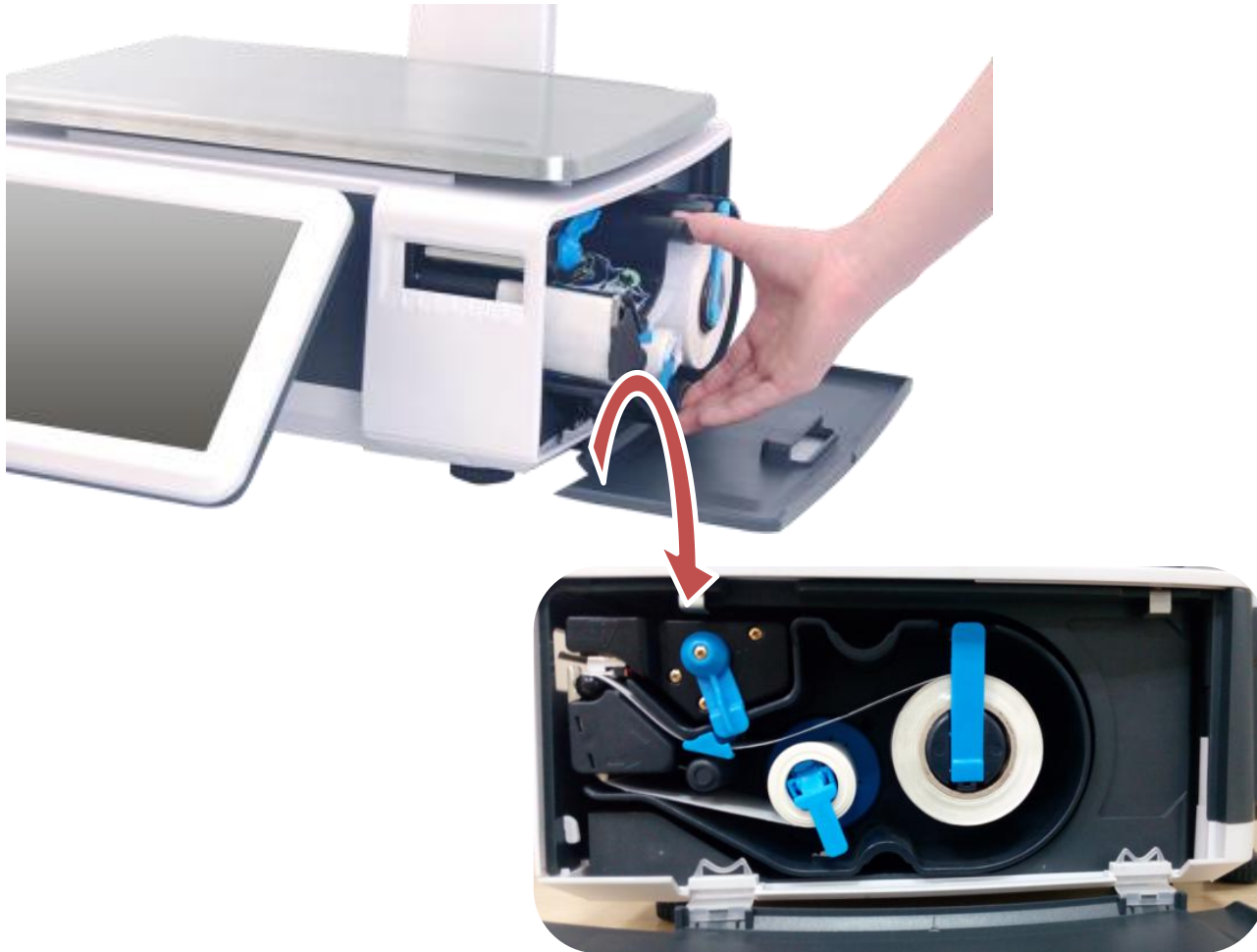
15 Label Printing
Application

+



Docking API

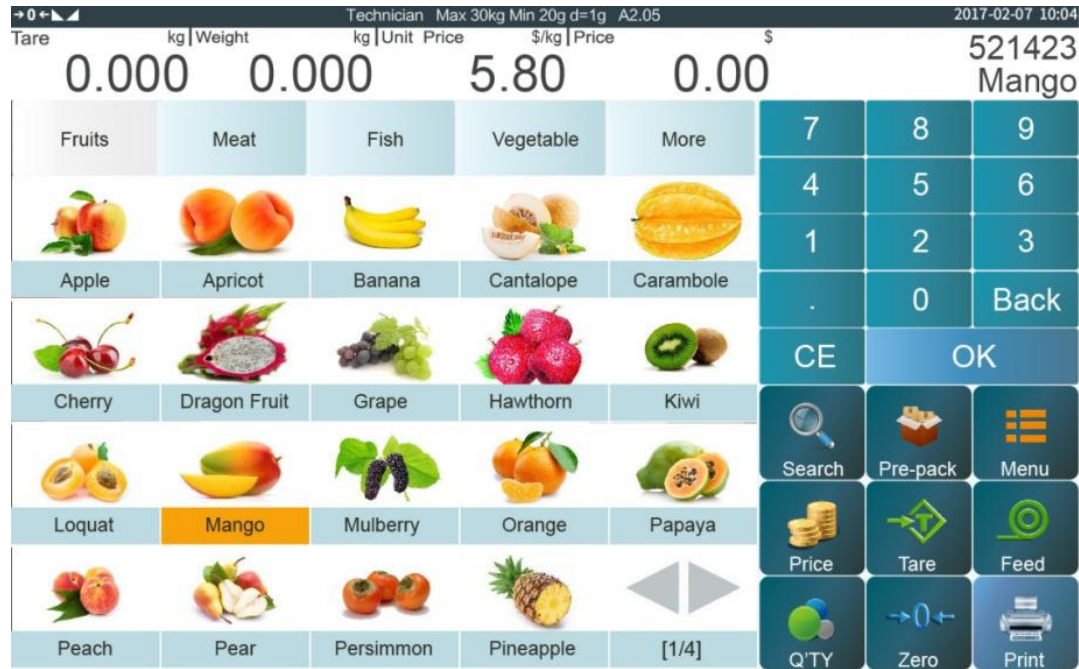
Cassette Type Printer



Simple and Fast paper changing.
Backup cassette can solve rush hour problems.

- 1 Label and Receipt Printing
- 2 Cassette Type
- 3 Support Price Tag Printing
- 4 Support Continuous Printing
- 5 Max Speed: 100mm/sec
- 6 Max Width: 50mm
- 7 Max Length: 15cm

Humanized operation interface



- Product graphic display, more intuitive
- Support product classification display
- PLU up to 99999
- Can display the name and number of the current weighing product
- Four weighing windows to meet the needs of pre-deduction
- Switch between pre-package and keypad mode
- Support PLU product name and number search
- Simple and fast operation, can realize one-key printing



Advertising Customer Display

Increase
your product market



Product Image



Image Advertisements



Video Advertisements



Satisfy Various Retail Model

The PA series label printing scale has 4 retail modes, and the operation interface is changed after switching between different modes, making the operation simpler and more intuitive.

The diagram illustrates four retail modes of the PA series label printing scale, arranged in a staircase pattern from bottom-left to top-right.

- Self Service:** Features a large screen with a list of instructions: "1.Place your item on scale.", "2.Search by product category or shelf number.", "3.Select the according product and push the button.", "4.Place the label on the product." Below the instructions are two large buttons labeled "Category" and "Shelf Number".
- Pre-packing:** The screen shows a grid of product categories (Fruits, Meat, Fish, Vegetable, More) with corresponding images. Below the grid are buttons for "Search", "Pre-pack", "Menu", "Price", "Tare", "Feed", "Q'TY", "Zero", and "Print".
- Accumulation:** The screen displays a list of products (Apple, Apricot, Banana, Cantalope, Carambole, Hawthorn, Kiwi, Orange, Papaya, Pineapple) with their respective prices and weights. A "Print Total" button is visible.
- Standard:** The screen shows a grid of product categories (Fruits, Meat, Fish, Vegetable, More) with corresponding images. Below the grid are buttons for "Search", "Pre-pack", "Menu", "Price", "Tare", "Feed", "Q'TY", "Zero", and "Print".

Abundant Accessories



Data transfer



Keyboard



Mouse



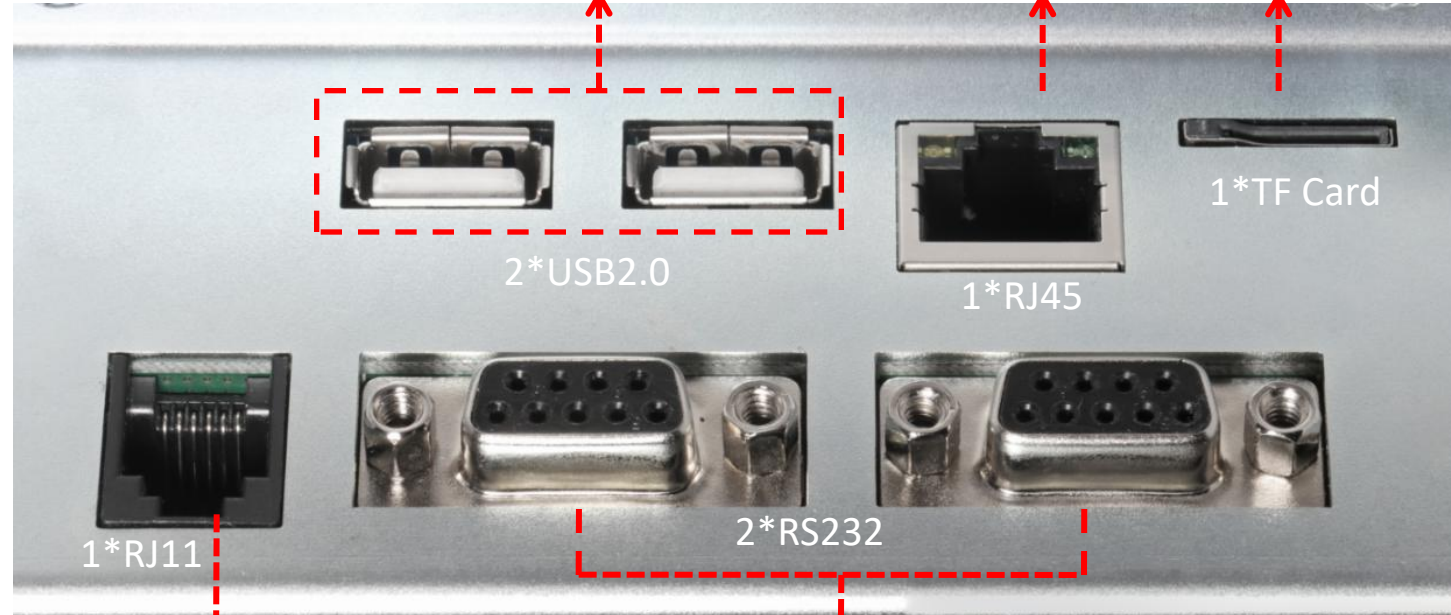
Scanner



LAN

TF Card port

Wireless:



2*USB2.0

1*RJ45

1*TF Card

1*RJ11

2*RS232



Cashbox



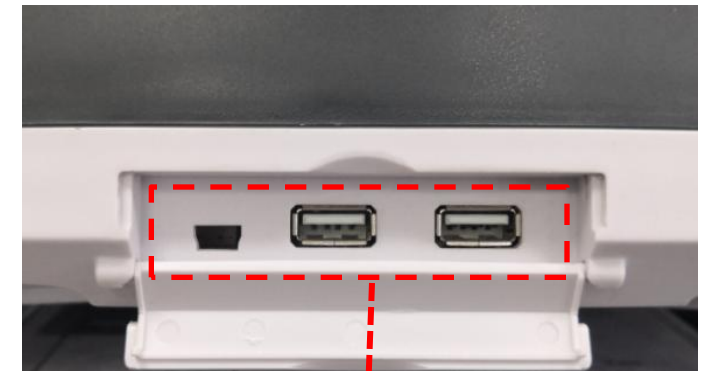
POS



Printer



PC



Data transfer



Keyboard



Mouse



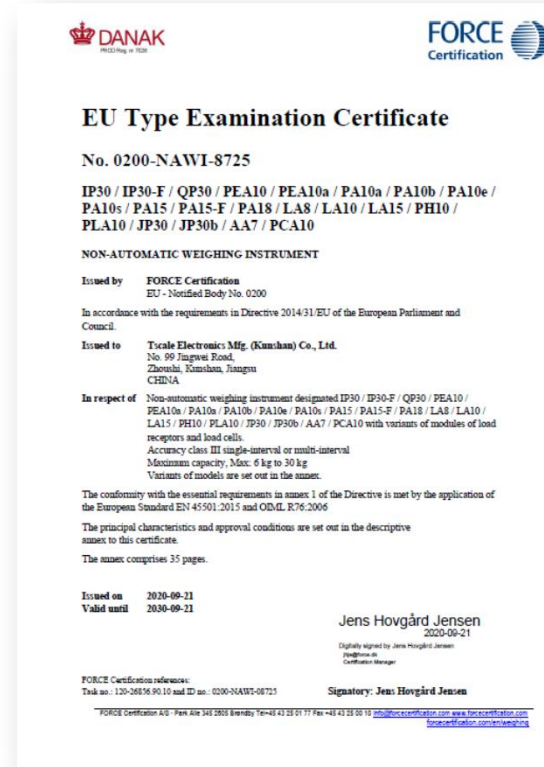
Scanner

Approval

The product has obtained the EU OIML measurement certification, NTEP certification and CE certification



CE



OIML



NTEP

Product
Management

Label Format
Design

Operating
Screen
Design

T-Touch Central

PA Series

Device
Management

Customer
Display
Management

Report
Management

Promotion
Board
Management

Backoffice Management

Apollo products can be connected to the computer background via Ethernet or WIFI for data transmission and remote management, and up to 254 devices can be connected to the same LAN at the same time



Use background management tools to perform

1. Device manage
2. Product manage
3. Print format
4. Software update



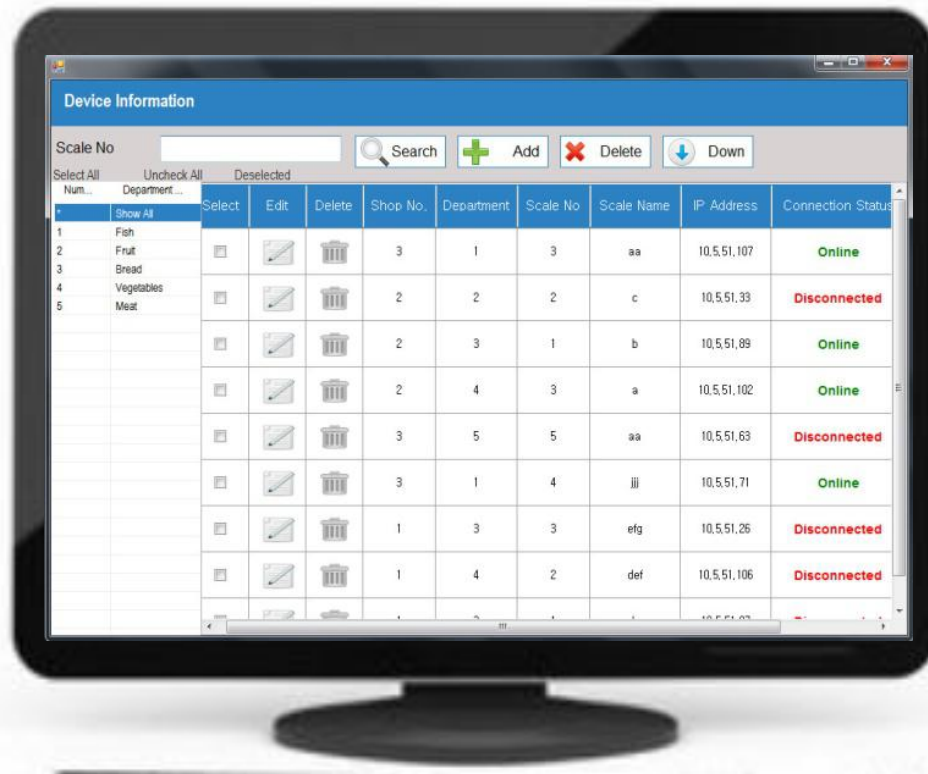
Device Management

Device setting & Monitoring

Data Transferring

Media Files Transferring

Software Update



Device Information

Shop No.

1

Department

Department 1

Scale No

1

Scale Name

Fruit Scale 1

IP Address

10.5.51.119

Enabled

TRUE

Main Back Color

255.255.255.255

Color Transparency

255

Screen Saver

Upload Image

Main Back Image

Upload Image

Save

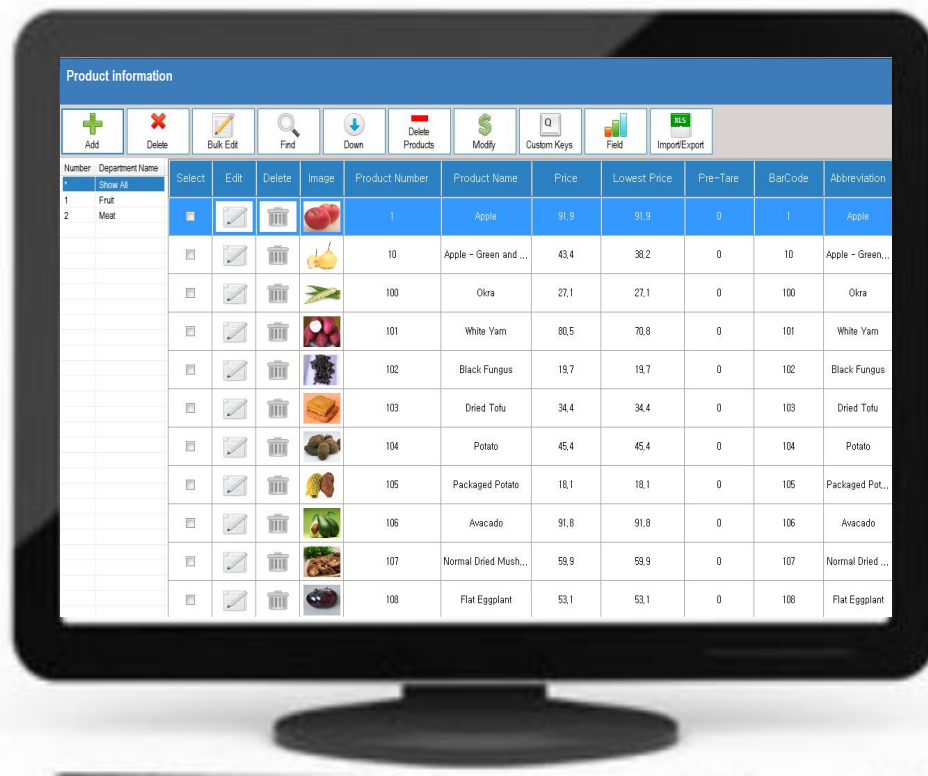
Product Management

Device setting & Monitoring

Data Transferring

Media Files Transferring

Software Update



Product information

Product Number
1
Product Name
Apple

Basic Information
Attributes
Product manual
Remarks

Product Number *
1
BarCode
1

Product Name *
Apple
Abbreviation
Apple

Price *
91.9
Sales Price
91.9

Pre-Tare
0
Price Unit
kg

Tax
Category
Fruits

Department
Show All

Upload

Save

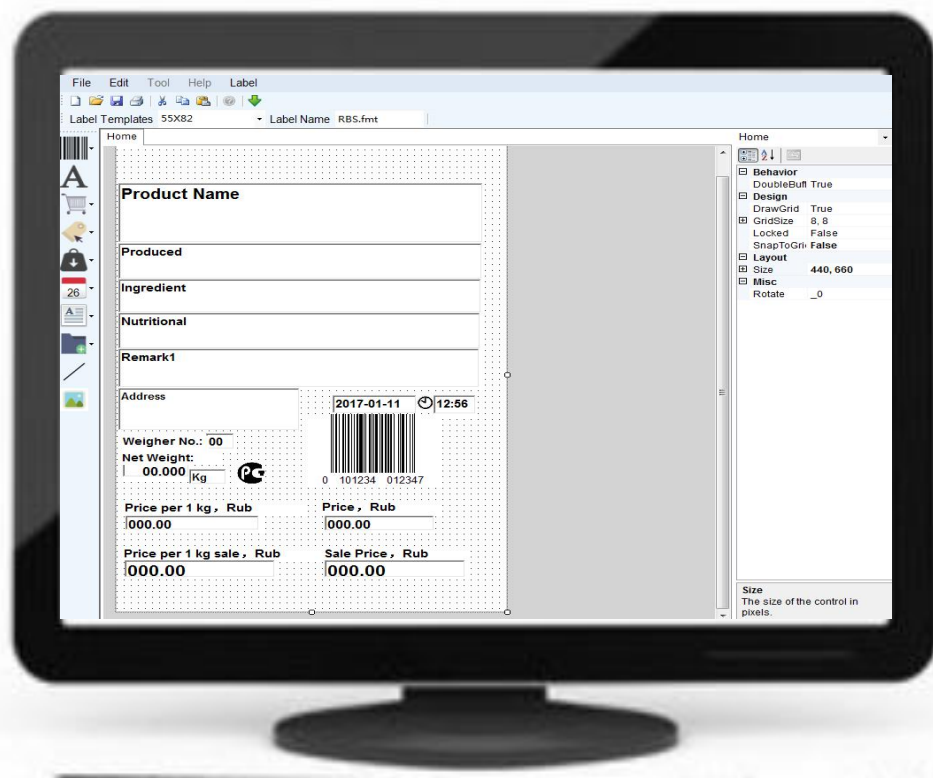
Label Format Editor

Customized Label
Print What You See

Barcode Editing

Supports Various Barcode Types

Image Printing



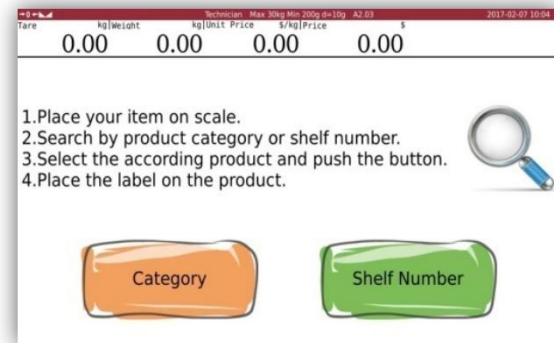
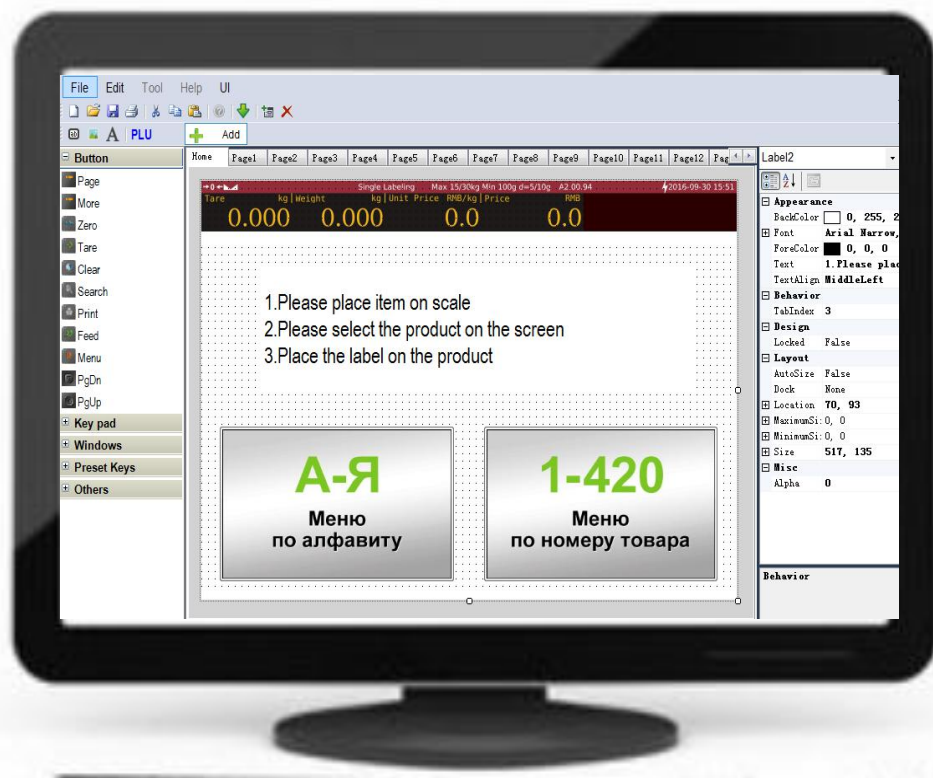
Operating Screen Editor

Customizable User Interface

User Friendly

Various Keyboard Selection

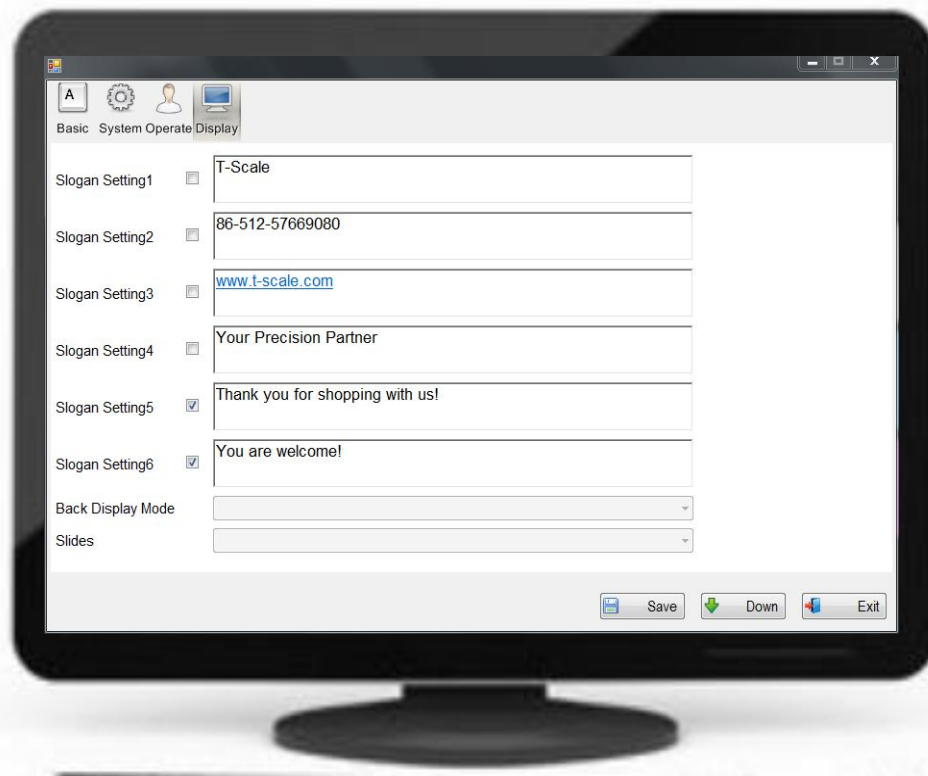
Support Product Image PLUs



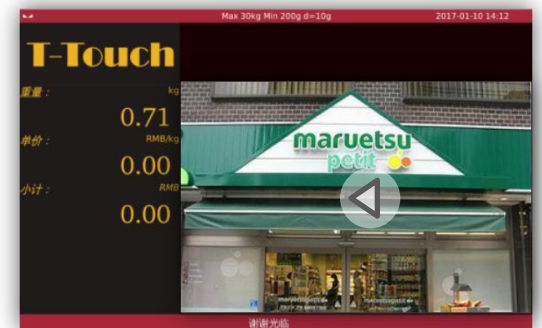
Text Editing

Advertisement Image Setting

Advertisement Video Setting



Image



Video

Report Management

Data Collection
Daily Report , Week, or Month
Category Reports
Sales Ranking Reports,etc.

Time	Scale	Name	Weight	Price	Total	Operator
1 22:08:41		Arugula	0.71	21.1	149.81	admin
2 22:08:41		Beet Root	0.71	13.6	96.56	admin
3 22:08:41		Bok Choy	0.71	31.7	225.07	admin
4 22:08:41		Broccoli	0.71	29.1	206.61	admin
5 22:08:41		Brussels Spr...	0.71	42.1	298.91	admin
6 22:09:02		Chicken Leg	0.71	59.99	42.59	admin
7 22:09:02		Chicken Wi...	0.71	55.3	39.26	admin
8 22:09:02		Chicken Wi...	0.71	55.3	39.26	admin
9 22:09:02		Duck Breast	0.71	49.5	35.15	admin
10 22:09:02		Filet Mignon	0.71	139.8	99.26	admin

Day	Scale	Count	Subtotal	Discount	Total
1 Mon		23	17,420.49	624.97	16,811.67
2 Tue		3	1,926.86	0.00	1,926.86
3 Wed		0	0.00	0.00	0.00
4 Thu		0	0.00	0.00	0.00
5 Fri		0	0.00	0.00	0.00
6 Sat		0	0.00	0.00	0.00
7 Sun		0	0.00	0.00	0.00
8 Total		26	624.23	0.00	624.23

No.	ListNum	Item	DateTime	Operator
1	201702210039	7	2017-02-21 22:09...	admin
2	201702210029	6	2017-02-21 22:08...	admin
3	201702210028	5	2017-02-21 22:08...	admin
4	201702200027	7	2017-02-20 21:47...	admin
5	201702200026	9	2017-02-20 21:47...	admin
6	201702200025	6	2017-02-20 21:47...	admin
7	201702200024	7	2017-02-20 18:46...	admin
8	201702200023	4	2017-02-20 18:46...	admin
9	201702200022	3	2017-02-20 18:46...	admin
10	201702200021	2	2017-02-20 18:45...	admin

Time	Scale	Name	Weight	Price	Total	Operator
1 22:08:41		Arugula	0.71	21.1	149.81	admin
2 22:08:41		Beet Root	0.71	13.6	96.56	admin
3 22:08:41		Bok Choy	0.71	31.7	225.07	admin
4 22:08:41		Broccoli	0.71	29.1	206.61	admin
5 22:08:41		Brussels Spr...	0.71	42.1	298.91	admin
6 22:09:02		Chicken Leg	0.71	59.99	42.59	admin
7 22:09:02		Chicken Wi...	0.71	55.3	39.26	admin
8 22:09:02		Chicken Wi...	0.71	55.3	39.26	admin
9 22:09:02		Duck Breast	0.71	49.5	35.15	admin
10 22:09:02		Filet Mignon	0.71	139.8	99.26	admin

Specification

PA Series

Specification

Model		PEA10	PA10	PA15	PA18
Weighing	Capacity (kg)	6/15; 15/30			
	Readability (g)	2/5; 5/10			
	Division	2x3000e			
Basic	Pan	280x385mm SST pan			
	Keyboard	Resistive touch screen		Capacitive touch screen (Optional resistive touch screen)	
	Housing	ABS plastic			
	Dimension	W:400xD:553xH:465mm	W:400xD:560xH:573mm	W:400xD:570xH:592mm	W:462xD:375xH:620mm
	Operation Environment	Temp. :−10° to 40° C; Humidity: <85%			
Display	Operate display	10.1” HD color display	10.1” HD color display	15.6” HD color display	18.5” HD color display
	Client display	7” HD color display	10.1” HD color display	15.6” HD color display	/
	Display ratio	16:9			
	Screen Resolution	10.1” :1280x800px 7” :800x480px	1280x800px	1366x768px	1366x768px
	Display channel	LVDS Bus			

Specification

Model		PEA10	PA10	PA15	PA18
System	Operation system	Linux embedded system, version 4.4			
Processor	Model	Rockchip RK3288			
	Core	Cortex-A17 Quad core			
	Main frequency	1.6GHz			
Storage	RAM	2GB			
	Memory type	DDR3			
	Hard disk size	16GB			
	Hard disk description	EMMC FLASH			
Multi-media	Support picture format	JPG 、 BMP 、 PNG various picture formats			
	Support audio format	MP3,WMA,WAV, APE, FLAC, AAC, OGG,M4A,3GPP format			
	Support video format	wmv、avi、flv、rm、rmvb、mpeg 、ts、mp4			
Communication	WIFI	2.4GHz/5GHz supports IEEE 802.11 a/b/g/n			
	Network port (RJ45)	10/100Mbps Adaptive network card			

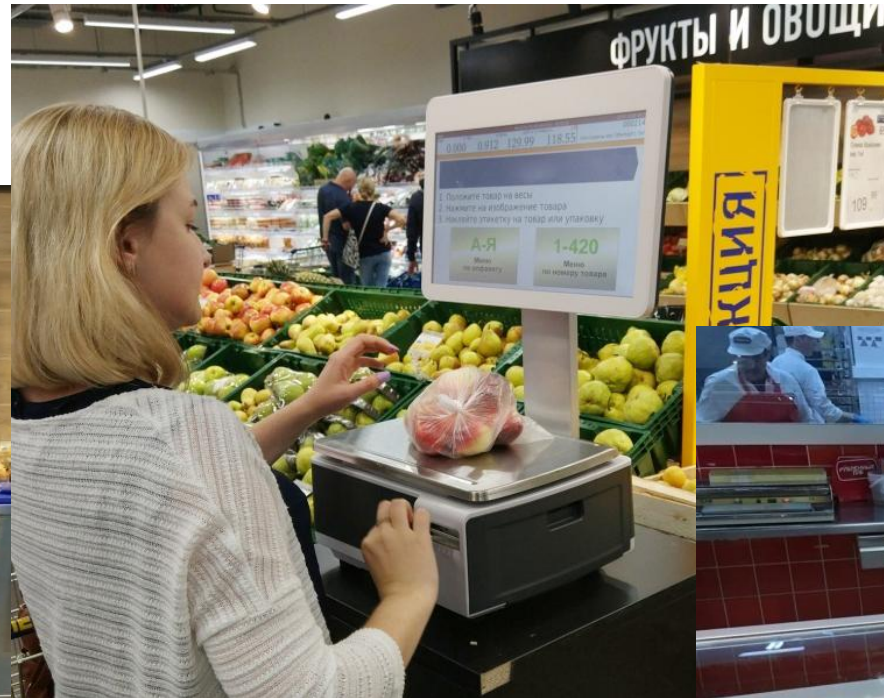
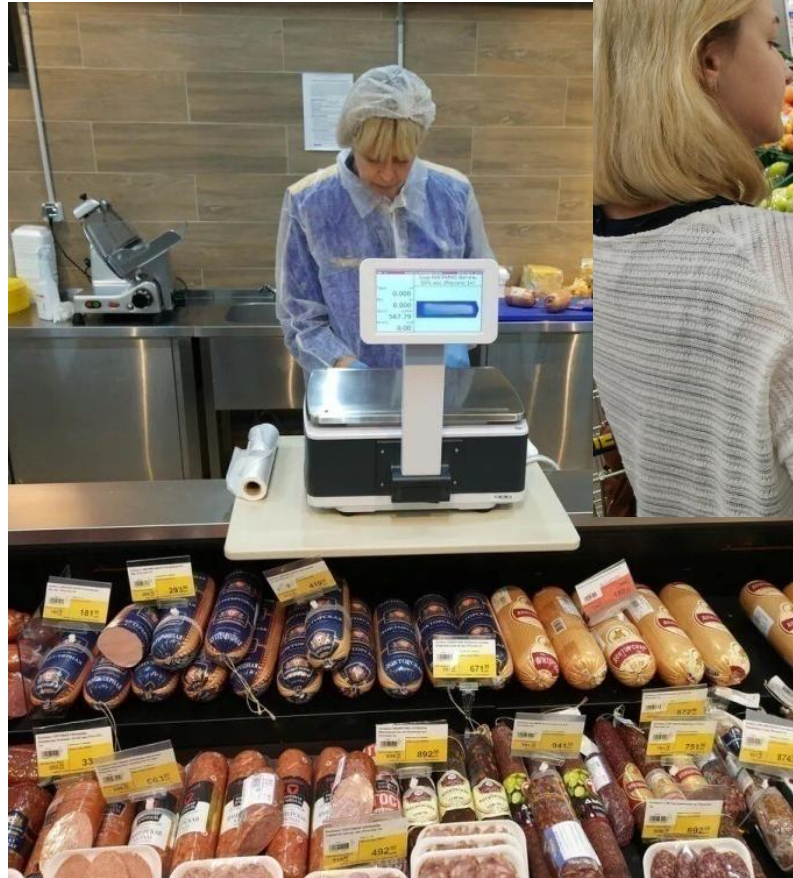
Specification

Model		PEA10	PA10	PA15	PA18
I/O Port	USB	3*USB2.0, 1*USB2.0 (OTG)			
	Series port	2*RS232			
	Cash drawer port	1*RJ11			
Others	Printer	60mm cassette type Label Printer Paper roll diameter 100mm Effective printing width 54mm Printing density 8 dots/mm, 384 dots/line Printing speed 100mm/s Support barcode and QR code printing			

Application

PA Series

Super Market



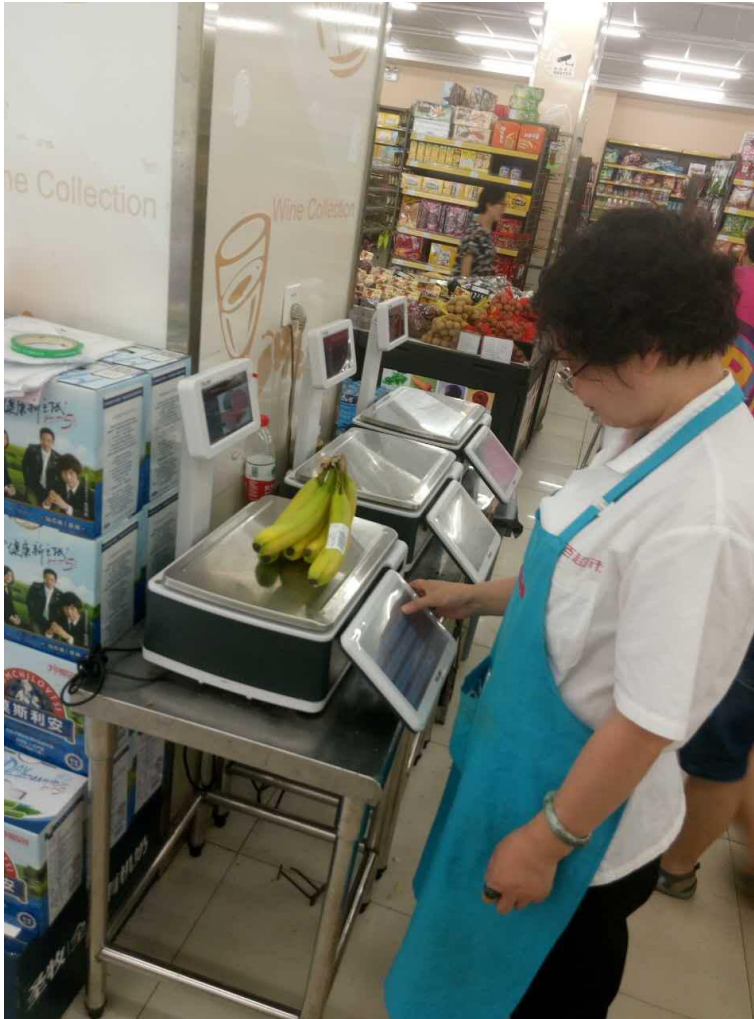
Super Market



Super Market



Chain Store



Chain Store



Other





For Further Information

Please Visit

www.t-scale.com

or Contact

sales@taiwanscale.com